



Coastal Heritage Society

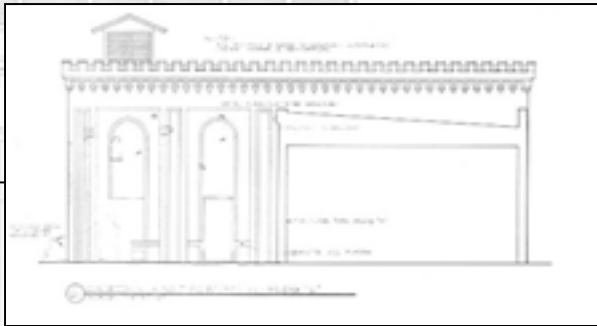
Visitors Center • Roundhouse Railroad Museum • Old Fort Jackson

Preservation Team • Railroad Operations • Archaeology

October 2006



Photo by Savannah Morning News, 1975



Compressor Room

Roof Construction

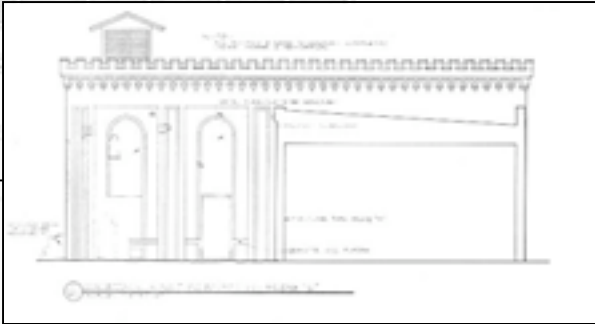
The Compressor Room roof nears completion as CHS Preservation Team members, Ian Ashenfelter, Nathan Harris, and Jack Tyson continue to rebuild it.



Compressor Room roof shortly after project began.



Current view of the roof looking east.



Compressor Room

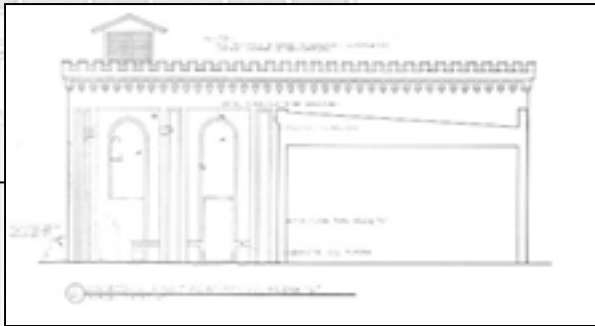
Roof Construction



Compressor Room cricket roof shortly before decking was installed.



Roof decking.



Compressor Room

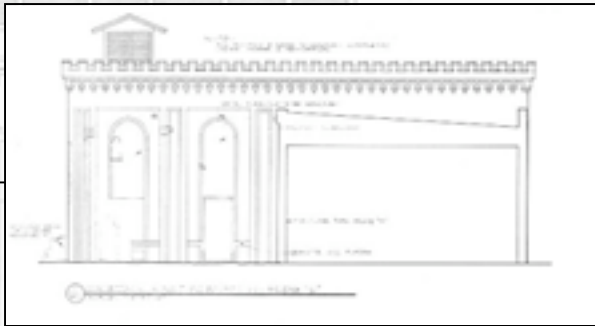
Roof Construction



A roofing membrane was installed with the assistance of John Herdina, roofing consultant.



Nathan Harris installs a cricket on the north side of the monitor.



Compressor Room

Roof Construction

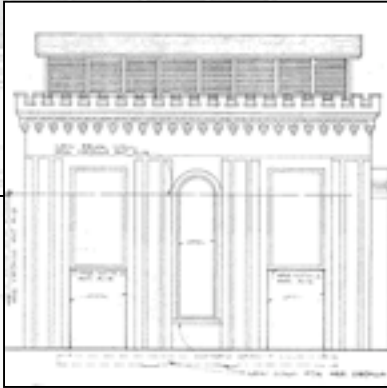
The interior of the Compressor Room has also changed with the addition of the new roof.



Interior view of the south wall before roof was completed.



Current interior view.



Traditional Masonry

Making mortar the old-fashioned way

Master Bricklayer Gerard Lynch was a special guest at the Roundhouse Railroad Museum earlier this month. While here, he gave CHS Preservation Team members a hands-on demonstration on making traditional mortar.



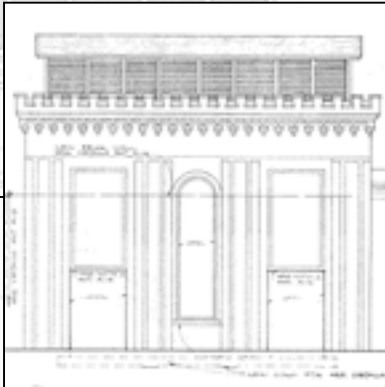
Gerard Lynch starts off by explaining the difference between traditional and ready-made mortar. A mound of Savannah River sand is prepared for the hands-on demonstration.



Travis Brown pours quicklime into the center of the mound of sand.

Traditional Masonry

Making mortar the old-fashioned way



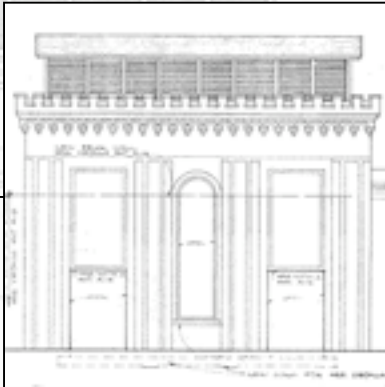
Steam is produced when Lynch and team members mix sand and lime together.



Lynch invites team members to feel the heat coming from the exothermic reaction between the sand and lime.

Traditional Masonry

Making mortar the old-fashioned way



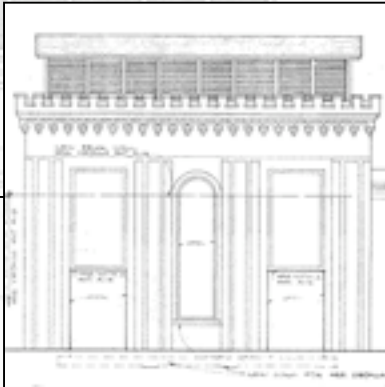
Lynch prepares the mixture of sand and lime for the addition of water.



Travis Brown pours water into the mixture while team members stir.

Traditional Masonry

Making mortar the old-fashioned way



Preservation team members mix lime, sand, and water to make mortar.



Close-up view of the finished product.



Tender Frame Shop

The southeast room on the first floor of the Tender Frame Shop is complete. It now serves as the Railroad Operations Office.

Rehabilitation



View of southeast room shortly after project began



View of room after completion.

Tender Frame Shop

Rehabilitation



View of southeast corner of the room shortly after project began



After completion.

NORTH ELEVATION
SCALE: 1/8" = 1'-0"

RENOVATED BRAKE SHOP



Tender Frame Shop

Moving Day

David Bird, Terry Koller, and Lily McNee moved into the new Railroad Operations office.



Northeast corner of the new office.

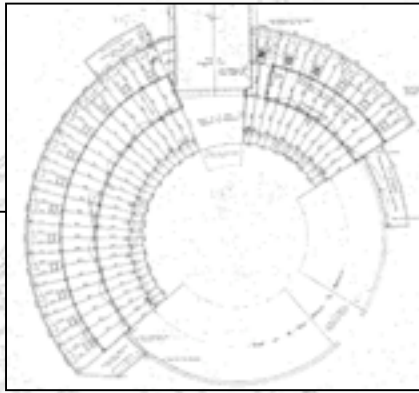


Southeast corner.

⊕ SOUTH ELEVATION - BLDG. "C"
SCALE: 1/8" = 1'-0"

⊕ NORTH ELEVATION
SCALE: 1/8" = 1'-0"

RENOVATED BRAKE SHOP



Overnight Shed

Pit Cover Construction

The two existing plywood pit covers were unstable and needed replacing. Preservation Team Members Charles Adkins, Jack Tyson, and Joe Lyons constructed new ones.



Preservation Team member Joe Lyons helps construct a pit cover for one of the lanes.

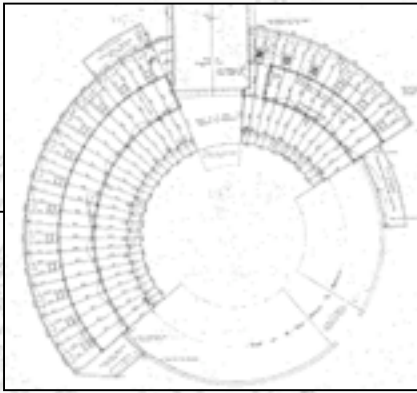


View of pit cover as it is being built.

DETAILS OF CAST IRON
RAIN CONDUCTORS.
SCALE 1/4" = 1'-0"
SEE DRAWING #12 FOR CAST IRON
RAIN CONDUCTORS IN COLORADO
LABORATORY SHOP.

Overnight Shed

Pit Cover Construction



Terry Koller shoves an historic boxcar into the lane with the nearly completed pit cover.

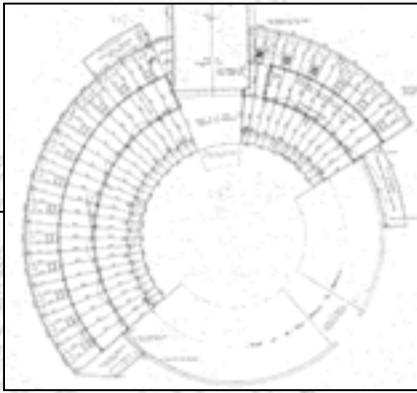


Preservation Team members stand proudly in front of the train car and nearly finished pit cover.

DETAILS OF CAST IRON
RAIN CONDUCTORS.
SCALE 1/4" = 1'-0"
SEE DETAIL #12 FOR CAST IRON
RAIN CONDUCTORS IN COLORED
LAUNDRY BATH.

Overnight Shed

Pit Cover Construction

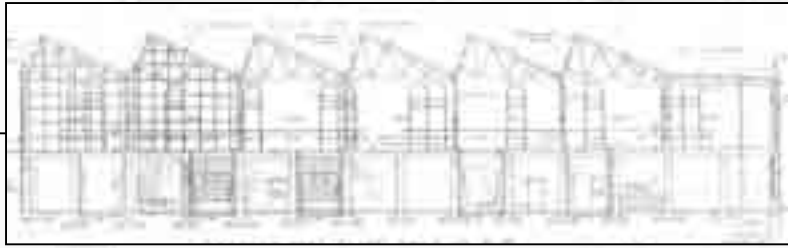


View of lane pit before construction of new pit cover.



View of pit cover after completion.

DETAILS OF CAST IRON
RAIN CONDUCTORS.
SCALE $\frac{1}{4}'' = 1'-0''$
SEE DETAIL #12 FOR CAST IRON
RAIN CONDUCTORS IN COLORED
LAUNDRY BATH.



Coach & Paint Shops

Steel Column Restoration

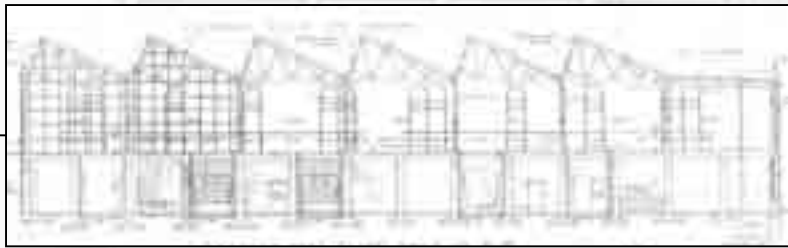
The steel columns in the historic Paint Shop are currently being restored. Recently some of the repaired columns were painted Central of Georgia Bottle Green on the bottom and white on the top. The way these columns were painted is historically-based on how they originally looked upon the building's completion in 1924-25.



Steel columns during repair work.



Steel columns after painting.



Coach & Paint Shops

Steel Column Restoration

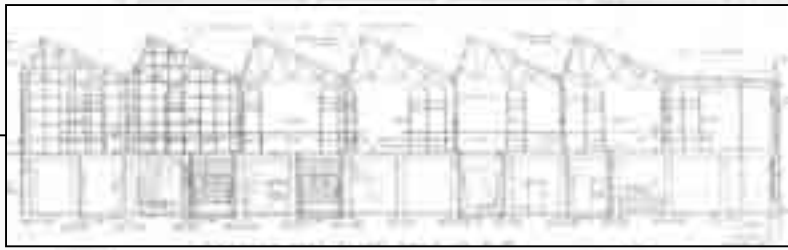
During their repair work on the Paint Shop's structural steel, preservation team members found columns that were signed during the railroad era.



Steel column signed on January 13, 1937.



Close-up view



Coach & Paint Shops

Window Restoration

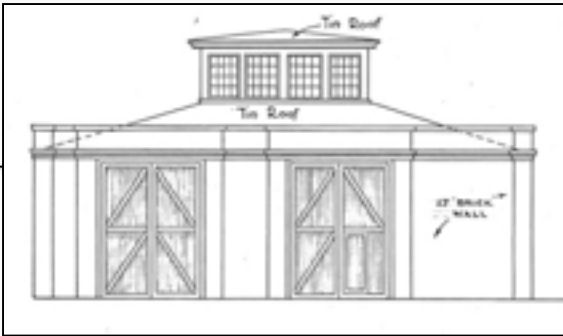
Windows in the Paint Shop are currently being removed for restoration work.



Chris Latson, Joe Rothwell, and Tim Gaffney remove a window from the interior west wall of the Paint Shop.



Current view of west façade with most of the main floor windows removed.



Carpentery Shop

Stabilization

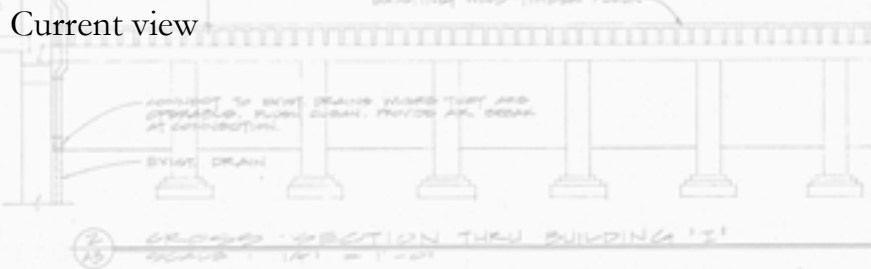
The CHS Preservation Team has started the fifth phase of repointing on the east wall of the Carpentery Shop.



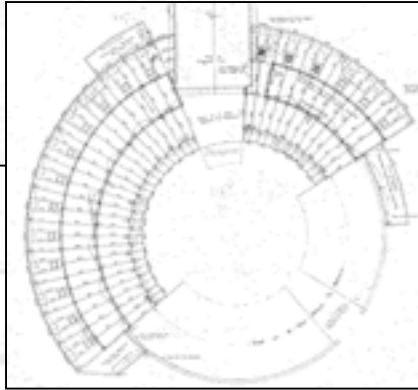
Current view



Current aerial view with scaffolding set up for fifth phase of repointing on the east wall.



ORIGINAL



Blacksmith Shop

CHS Preservation Team members recently repaired the concrete floor in the Blacksmith Shop.

Masonry Repair



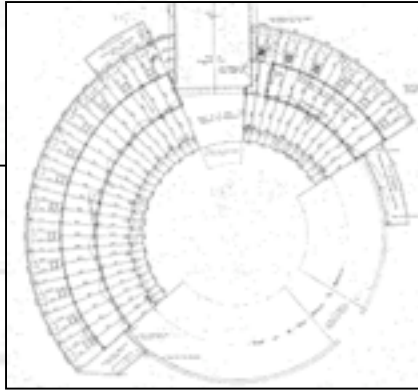
The concrete floor in the southwest end of the Blacksmith Shop was cracking due to numerous factors including uneven settling from previous repairs.



View of the repaired concrete floor.

Blacksmith Shop

Masonry Repair

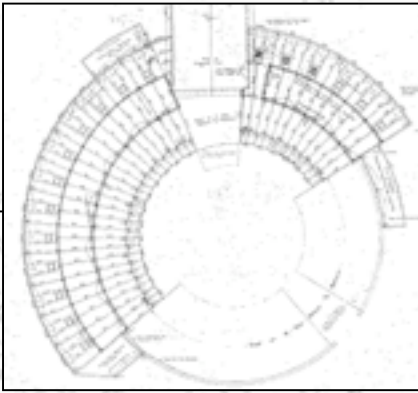


Historic Masonry Specialist Travis Brown drills away deteriorated concrete in order to repair it.



Close-up view of deteriorated concrete.

Railroad Operations



David Bird and Terry Koller are installing tracks on the northwest end of the site.



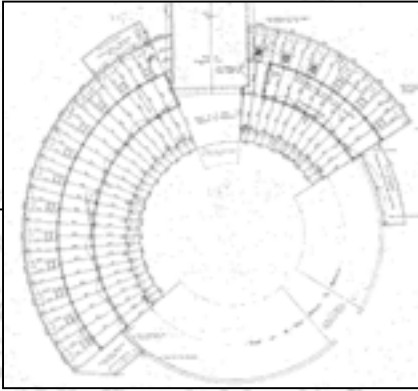
David Bird and Terry Koller go over an historic map of the site to determine the original track layout.



Lily McNee holds the level as David and Terry survey the track layout.

DETAILS OF CAST IRON
RAIN CONDUCTORS.
SCALE 1/2"=1'-0"
SEE DETAIL #12 FOR CAST IRON
RAIN CONDUCTORS IN COLORED
LAUNDRY BATH.

Railroad Operations



Tracks are currently being laid on the northwest end of the site.



Views of the new tracks being laid

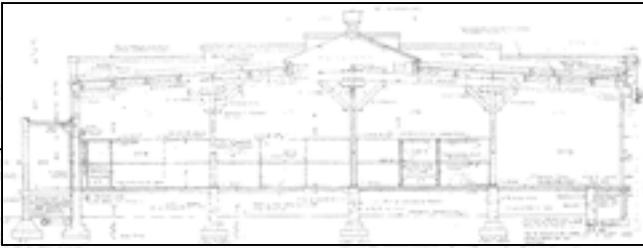


DETAILS OF CAST IRON RAIN CONDUCTORS.
SCALE 1/4" = 1'-0"
SEE DRAWING #12 FOR CAST IRON RAIN CONDUCTORS IN COLORED LAVATORY ROOM.

Storehouse

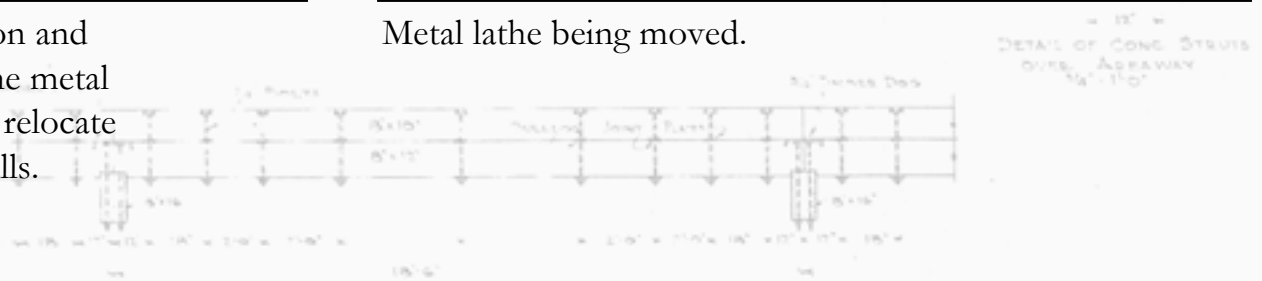
The line shaft exhibit walls in the Storehouse are currently being taken down in order to relocate the exhibit and facilitate future repairs and restoration work to the building.

"Tear Down This Wall."



With help from Curator Lydia Moreton and John Roberson, Bryan Law moved the metal lathe from the Storehouse in order to relocate the exhibit and remove the exhibit walls.

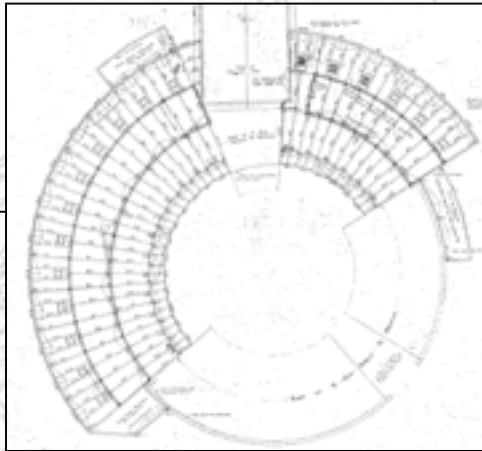
Metal lathe being moved.



Site Work

Whitewashing the Retaining Wall

Preservation Team members continue whitewashing the retaining wall on Purse Street.



Current view



Jason Cobb applies whitewash to the wall.

DETAILS OF CAST IRON
RAIN CONDUCTORS.
SCALE 1/4" = 1'-0"
SEE DETAIL #12 FOR CAST IRON
RAIN CONDUCTORS IN COLORED
LAUNDRY ROOM.

Best of the South: Preserving Southern Architecture Award

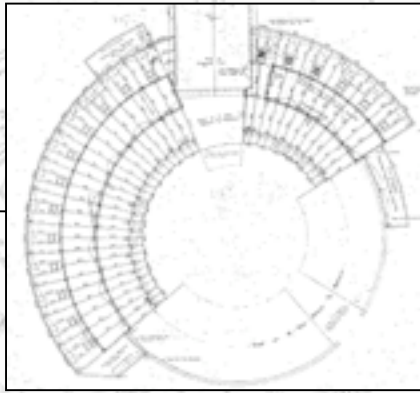
The Coastal Heritage Society Preservation Team received top honors from the Southeast Chapter of the Society of Architectural Historians (SESAH). The Best of the South Award is given to a project, in an eleven state region, that preserves or restores an historic building, or complex of buildings, in an outstanding manner and that demonstrates excellence in research, technique, and documentation.



One of the architecturally significant sites viewed during the conference.



Preservation Planner/Project Manager Tracy Bakic (far right) and Project Manager Jeanne Fullam (second from right) accept the award at the SESAHA Awards Banquet in Auburn, Alabama.



Historic Savannah Foundation Preservation Award

The Coastal Heritage Society Preservation Team also received a Preservation Award from the Historic Savannah Foundation. The award honors the work performed on the Tender Frame Shop, Spring Hill Redoubt, Backshops, and Overnight Shed. This is the third year in a row that the Preservation Team has received this honor.



HSF representatives congratulate Coastal Heritage Society recipients.



Curator of Exhibits and Archaeology Rita Elliott and Curator of Buildings Stewart Dohrman accept award certificates from HSF representatives.

5 OF CAST IRON
RAIN CONDUCTORS.
SCALE 1/4"=1'-0"
SEE SHEET #12 FOR CAST IRON
RAIN CONDUCTORS IN COLORED
LAVATORY ROOM.