

Roundhouse Railroad Museum

CHS Preservation Team Projects

May 2006



HAER NO. GA-1-1



Tender Frame Shop

Window Restoration

The first floor windows of the Tender Frame Shop are currently being restored.



Kurt removes the deteriorated glazing on a window from the first floor of the Tender Frame Shop.



After the deteriorated glazing is removed, new glazing is applied. Charles is shown reglazing a window.

Tender Frame Shop

Window Restoration



Nathan is sanding the casings where the restored windows will be reinserted on the south side of the Tender Frame Shop.



⑤ SOUTH ELEVATION - BLDG. "C"
SCALE: 1/8" = 1'-0"

④ NORTH ELEVATION - BLDG. "C"
SCALE: 1/8" = 1'-0"

RENOVATED BRAKE SHOP

Tender Frame Shop

Window Restoration



WEST ELEVATION - BLDG. "C"
SCALE: 1/8" = 1'-0"



Ryan primes the window casing before the restored window is reinserted.

SOUTH ELEVATION - BLDG. "C"
SCALE: 1/8" = 1'-0"



Kurt and Charles install a newly restored window.

NORTH ELEVATION
SCALE: 1/8" = 1'-0"



Tender Frame Shop

Floor Repair



Chris, Jeanne, and Ryan remove the floorboards of the first floor of the Tender Frame Shop to access the rotted and termite damaged floor joists.



The CHS Preservation Team is repairing the joists that can be saved and replacing the others in kind. The floor boards were numbered so they can be reinstalled in the same order as they were taken out.

NORTH ELEVATION
SCALE: 1/8" = 1'-0"

RENOVATED BRAKE SHOP

Tender Frame Shop

Archaeology



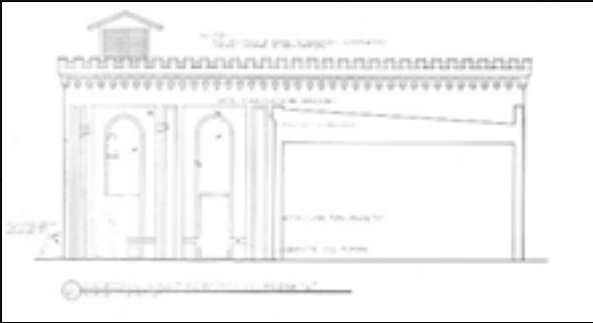
While uncovering the floor joists of the first floor, the CHS Preservation Team discovered a large amount of glass bottles that will be researched and documented by CHS Archaeologist, Rita Elliot.



5 SOUTH ELEVATION - BLDG. 'C'
SCALE: 1/8" = 1'-0"

4 NORTH ELEVATION
SCALE: 1/8" = 1'-0"

RENOVATED BRAKE SHOP



Compressor Room

Repointing

The CHS Preservation Team continues to repoint all walls of the Compressor Room.



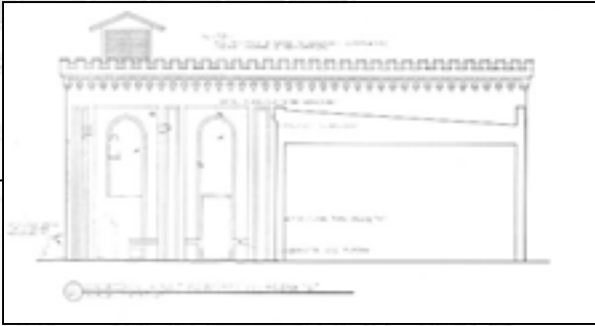
West wall



North wall



South wall

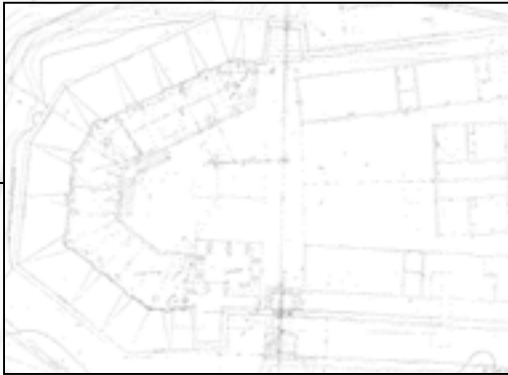


Compressor Room

Repointing

Extensive repointing is taking place along a major crack in the east wall of the Compressor Room.



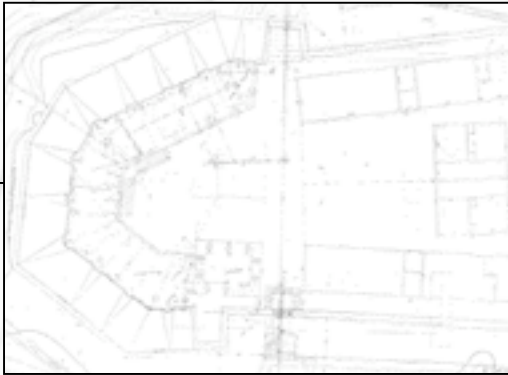


Old Fort Jackson

Priming and Painting Tybee Depot

Don, Charles, and Kurt give
the Tybee Depot a facelift.



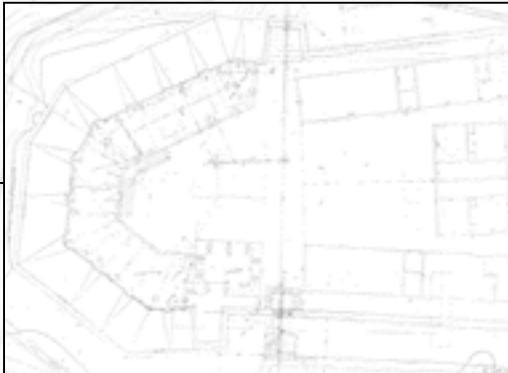


Old Fort Jackson

Priming and Painting Tybee Depot



John Roberson replaced rotted wood with new material.



Old Fort Jackson

Priming and Painting Tybee Depot



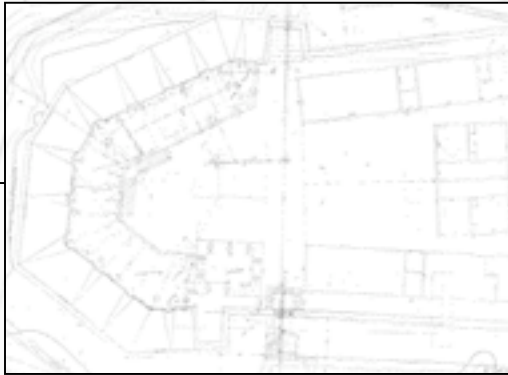
Front facade



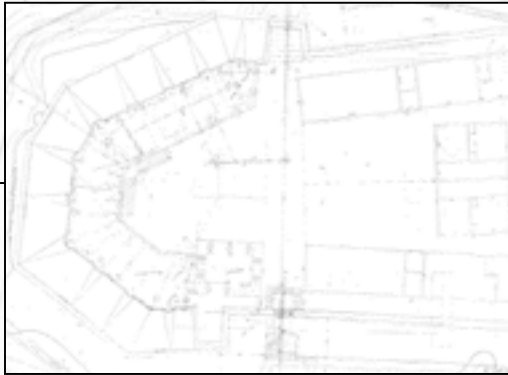
Rear facade

Old Fort Jackson

Priming and Painting Tybee Depot



The finished product.



Old Fort Jackson

Priming and Painting Tybee Depot

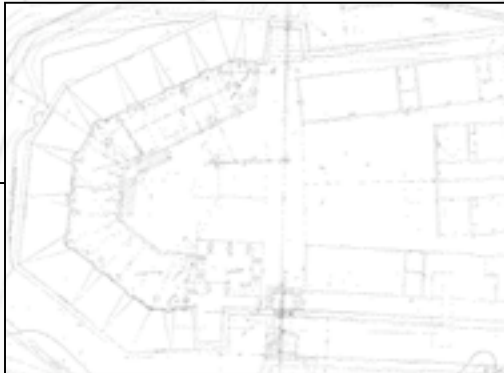


Close-up views of
the freshly painted
Tybee Depot.



Old Fort Jackson

Mold Removal from the Casemates

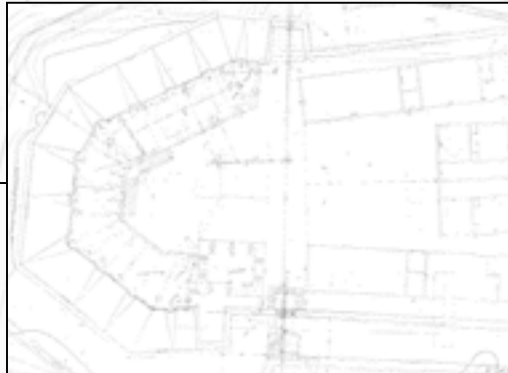


Close-up view of removed substance

Krystal removes a mixture of salts and mold from the ceiling of one of the casemates, using a 5-in-1 tool to gently remove the substance and a bucket to catch it.

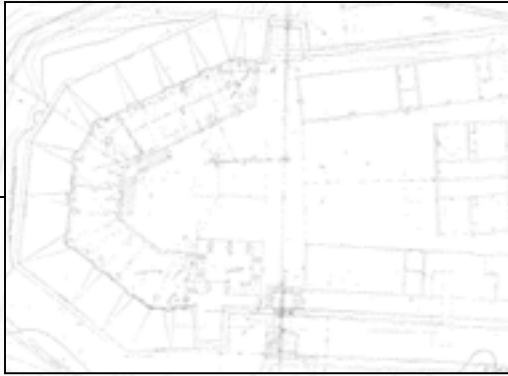
Old Fort Jackson

Mold Removal from the Casemates



Patricia removes the mold with a mild cleanser and brush before gently rinsing it away with a low-pressure water spray.





Old Fort Jackson

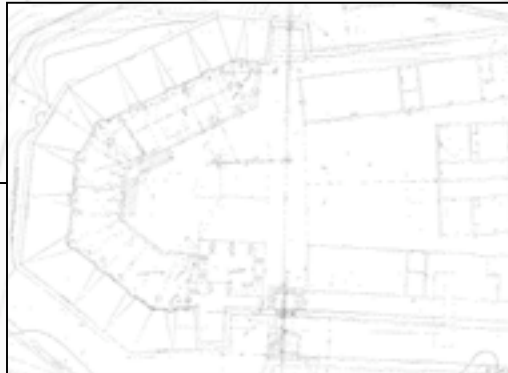
Mold Removal from the Casemates

After removing and rinsing mold from the wall, Krystal squeegees the water as Patricia vacuums it with a wetvac.



Old Fort Jackson

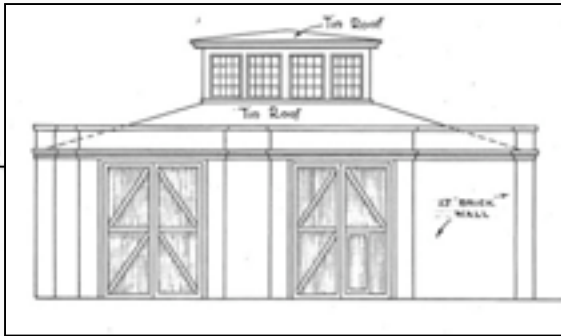
Mold Removal from the Casemates



Before mold was removed



After it was cleaned



Carpentry Shop

Rust Removal

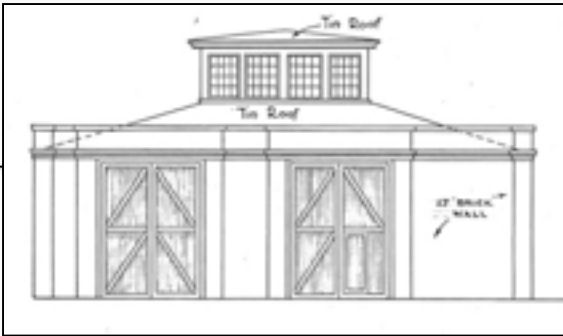
Travis and Kevin are currently removing rust from a metal member within the Carpentry Shop wall using a technique that incorporates a low-voltage electrical charge.



First, Travis and Kevin dampened the area surrounding the rusted metal.



The second step involved applying tissue soaked in a mixture of sodium carbonate (soda ash) and water around the treated area, which must remain moist for the entire process.



Carpentry Shop

Rust Removal

To keep the tissue applied to the wall and provide a metal attraction for the charge, Travis and Kevin covered the area with wire mesh.



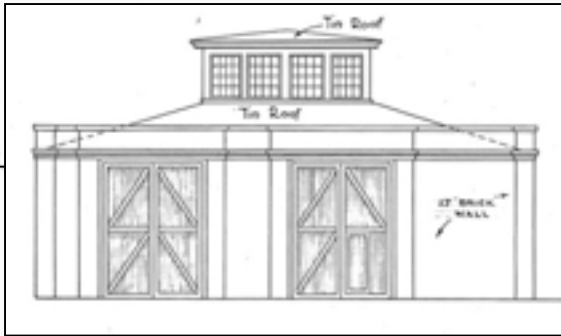
25 CROSS SECTION THRU BUILDING 'A'
SCALE: 1/4" = 1'-0"

26 PARTIAL ELEV. & PARAPET
SCALE: 1/4" = 1'-0"

ORIGINAL

Carpentry Shop

Rust Removal



A low-voltage electrical charge was then applied to the area.

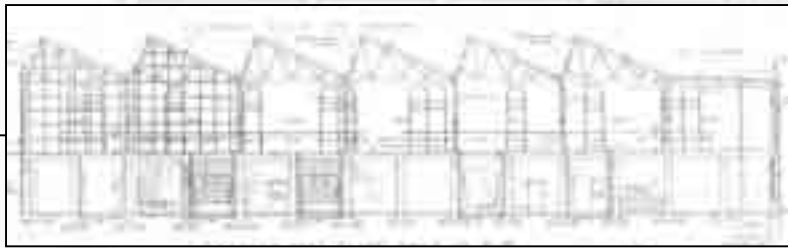


After 24 hours, the treated area is already showing signs of rust removal as oxygen is being transferred from the metal to the tissue through magnetic attraction.



PARTIAL COPY & PARAPHT

ORIGINAL



Coach & Paint Shops

Window Restoration



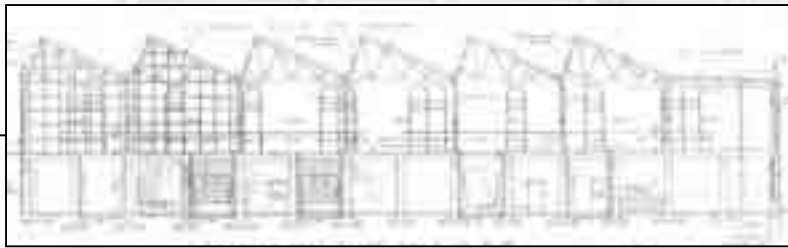
Amy Grace is currently working on the leftmost window in this picture, located on the south wall of the Paint Shop.

Amy Grace is removing a portion of the concrete sill where rust jacking has occurred in the window frames of the Paint Shop. The rebar will be removed and replaced, and Jahn concrete repair will be used to fill the remaining hole.



Amy Grace cuts hatch marks into the concrete sill in order to remove areas of rust jacking.





Coach & Paint Shops

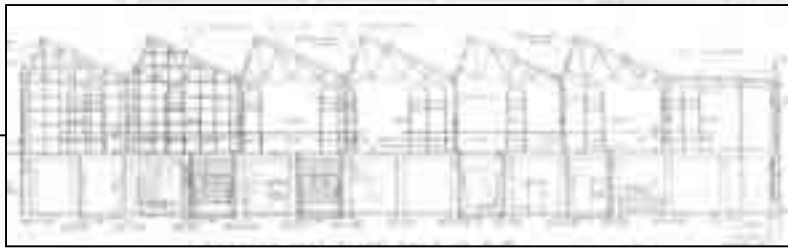
Window Restoration



After Amy Grace cuts hatch marks into the concrete, she uses a hammer to drill away portions of the concrete surrounding the rusted rebar.



Close-up view of area where rebar will be replaced and Jahn concrete repair will fill the void.



Coach & Paint Shops

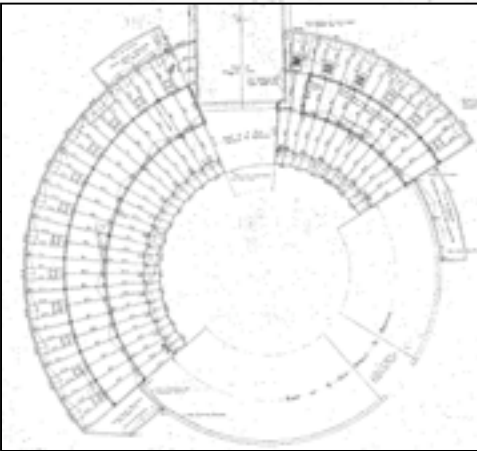


The CHS Preservation Team continues to work on structural steel repairs and door restoration in the Coach Shop.



Woodblock Floors

Bill Hersch inserted shims between each newly installed woodblock before filling the spaces with expandable cork. After cork was inserted, the shims were removed.



RAIN CONDUCTOR TYPE 'A'

DETAILS OF CAST IRON
RAIN CONDUCTORS.
SCALE 1/4" = 1'-0"
SEE SHEET #12 FOR CAST IRON
RAIN CONDUCTORS IN COLORED
LAVATORY ROOM.

Artifacts Collection

Cleaning and Cataloguing

CHS Artifacts Collections Technician, Kevin Adams, has been cataloguing and marking artifacts that have been found around the site.



View of two drill bits that have been found on site. The bottom one has been cleaned of rust.

DETAILS OF CAST IRON
RAIN CONDUCTORS.
SCALE $\frac{1}{4}'' = 1'-0''$
SEE SHEET #12 FOR CAST IRON
RAIN CONDUCTORS IN COLORED
LAUNDRY BATH.



Visitors Center

Window Restoration



Don uses a mortis drill to insert mortises into a window frame.



Don has removed the rotted bottom piece of a window from the Visitors Center and replaced it with new wood, joining the new pieces to the original frame with biscuit joints on the sides, and mortis and tenon joints at the corners.



Close-up view of a biscuit joint