

Roundhouse Railroad Museum

Preservation Projects

March 2006



HAER NO. GA-1-1

Tender Frame Shop

Painting the walls.



Jocelyn and Charles put the finishing touches of paint onto the partition walls.



Tender Frame Shop



Interior wall with desk openings.



Cubicle before carpet and desk were installed.

NORTH ELEVATION
SCALE: 1/8" = 1'-0"

RENOVATED BRAKE SHOP



Tender Frame Shop

Cleaning before the big move.



Lissa cleans the exterior surfaces of the air ducts in the ceiling space above the office.



Jessica vacuums dust that has accumulated below the desks along the wall.

Tender Frame Shop

Putting it all together.



⊕ SOUTH ELEVATION - BLDG. "C"
SCALE: 1/8" = 1'-0"

⊕ NORTH ELEVATION
SCALE: 1/8" = 1'-0"

RENOVATED BRAKE SHOP

Tender Frame Shop

Moving Day.



New computers and carpet are installed..



Boxes of supplies and files are moved from the Dispatch Office into the new office space of the Tender Frame Shop.

⊕ SOUTH ELEVATION - BLDG. "C"
SCALE: 1/8" = 1'-0"

⊕ NORTH ELEVATION
SCALE: 1/8" = 1'-0"

RENOVATED BRAKE SHOP



Tender Frame Shop

Building the stairs.



The frame for the new staircase is laid out.



Ian and Nathan start constructing the stairs to the conference room.

NORTH ELEVATION
SCALE: 1/8" = 1'-0"

RENOVATED BRAKE SHOP

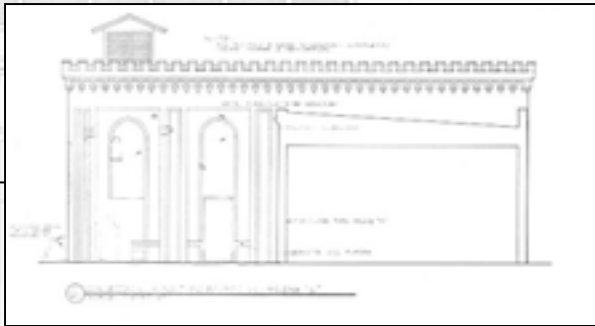
Tender Frame Shop



Stairs nearing completion.



Paint is being applied to the new staircase.



Compressor Room

Repointing and Stabilization.



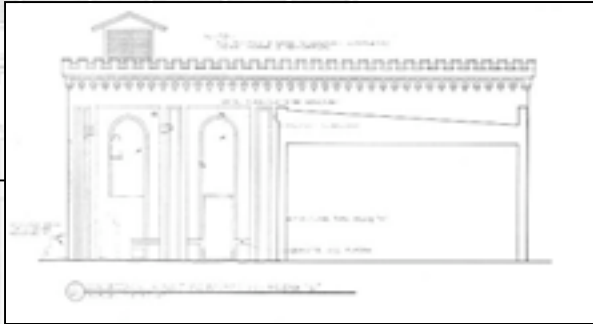
Areas along the parapet wall have been repointed and are now covered with burlap.

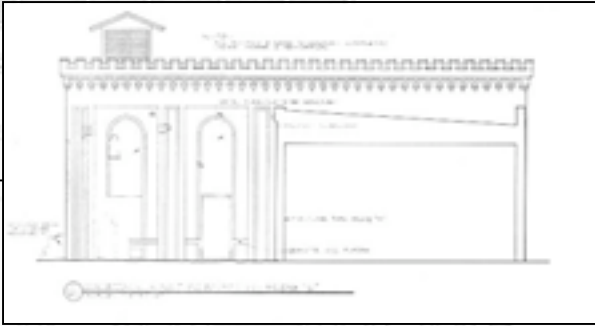


Repointing is being done on the west end of the parapet wall.

Compressor Room

Repointing and Stabilization.





Compressor Room

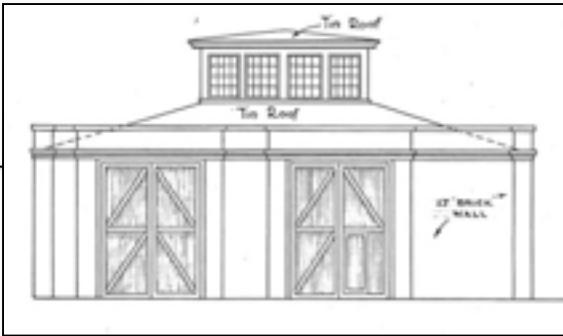
Repointing and Stabilization.



Lorraine repoints, while Travis replaces a brick that has fallen out.



Julie repoints the bottom portion of the parapet wall.



Carpentry Shop

The north end of the carpentry shop wall is currently being repointed.

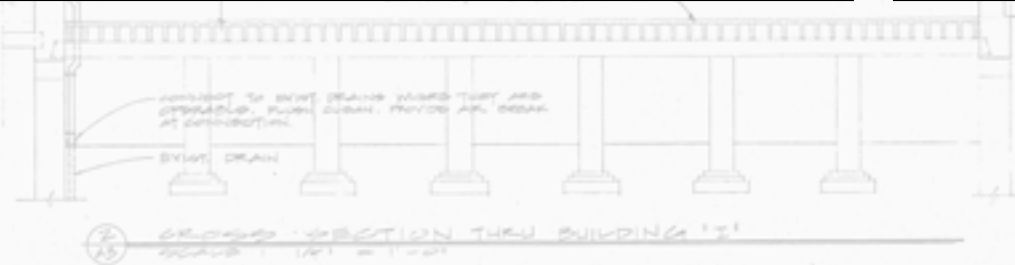
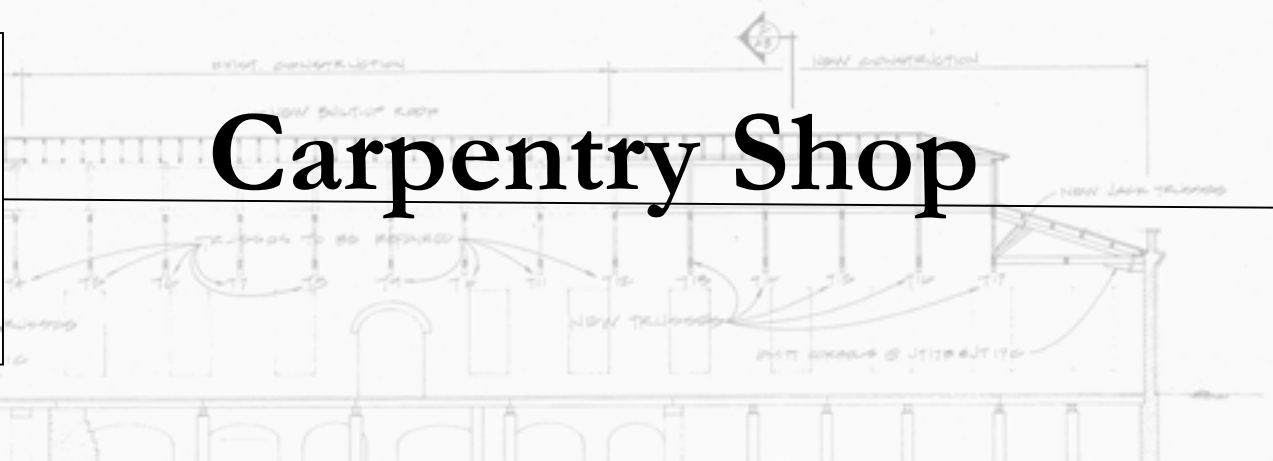
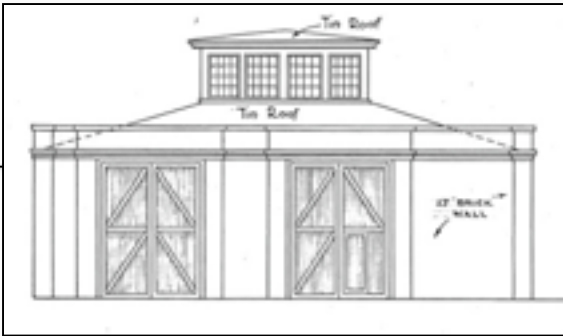


25 CROSS SECTION THRU BUILDING 'A'
SCALE 1/4" = 1'-0"

35 PARTIAL ELEV. & PARAPET
SCALE 1/4" = 1'-0"

ORIGINAL

Carpentry Shop



Spring Hill Redoubt



Joe cuts the grass that has grown around the redoubt.



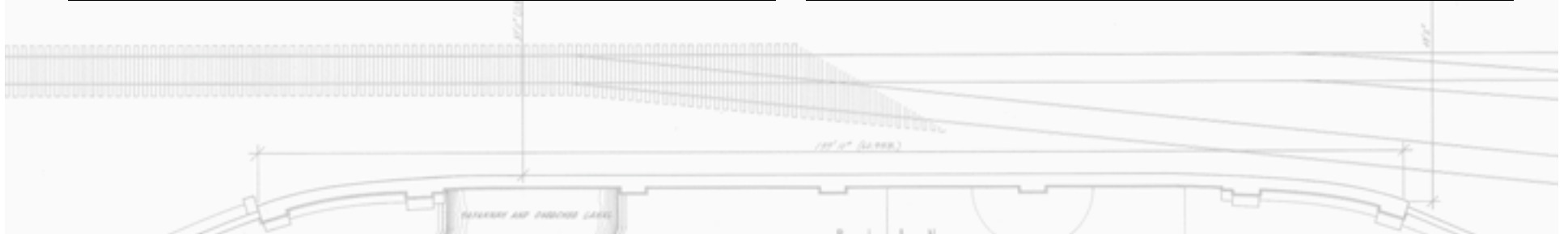
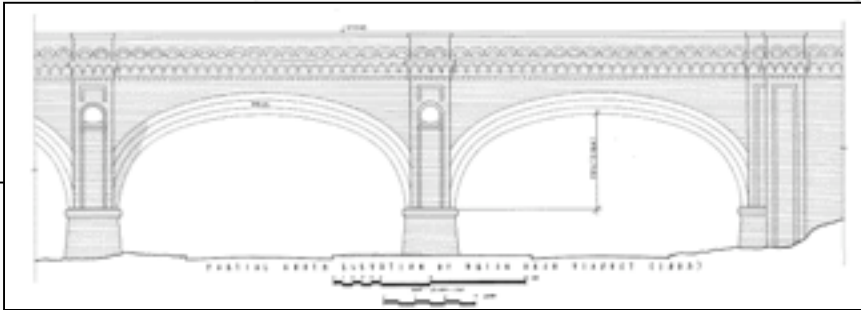
Amy and Joe measure the top portion of the post that needs to be cut.

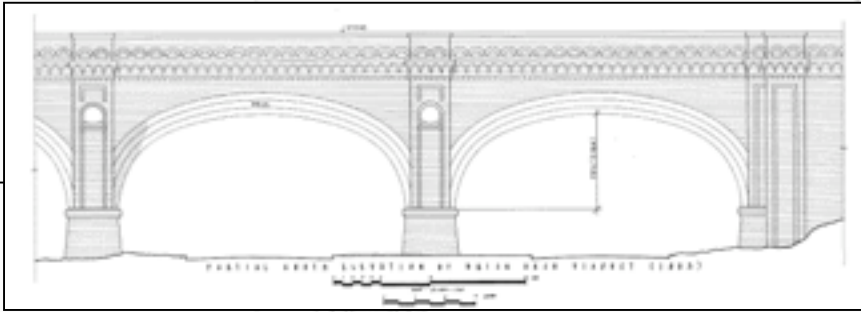


Amy prepares to cut the top portion of the post to make it even with the ground

Viaduct

Aerial Views





Viaduct

View from on top of the viaduct looking towards the Savannah History Museum.

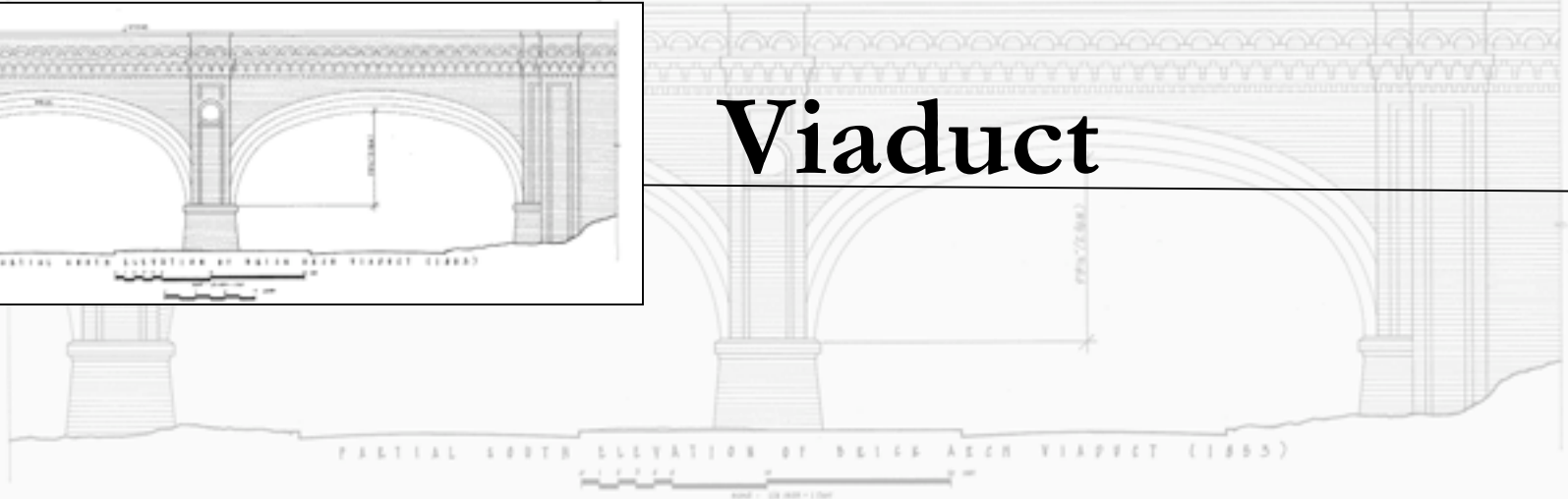
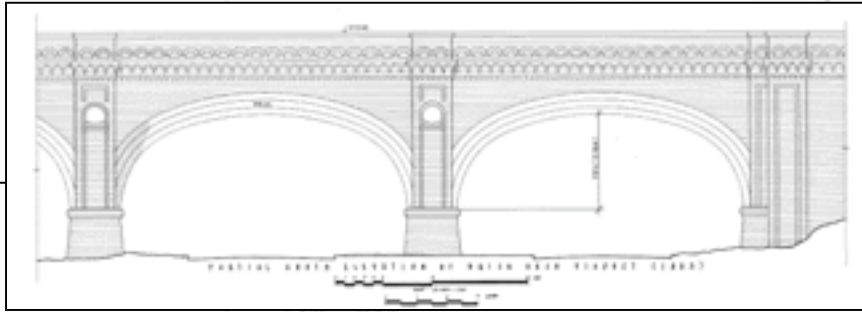


Before cleanup began, weeds and other invasive plants were taking over the area over the viaduct.



The same area after cleanup.

Viaduct

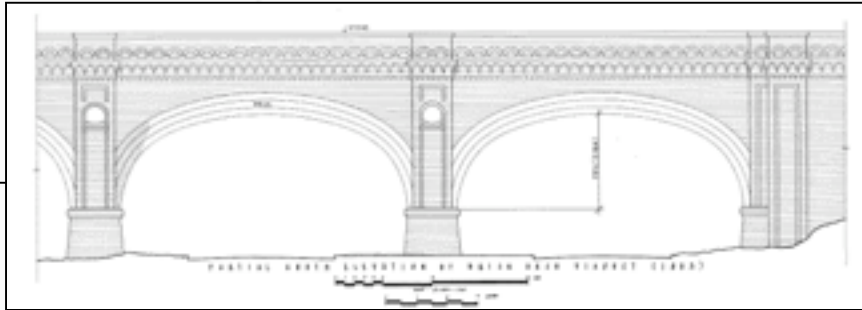


Overgrown area where rails were found.



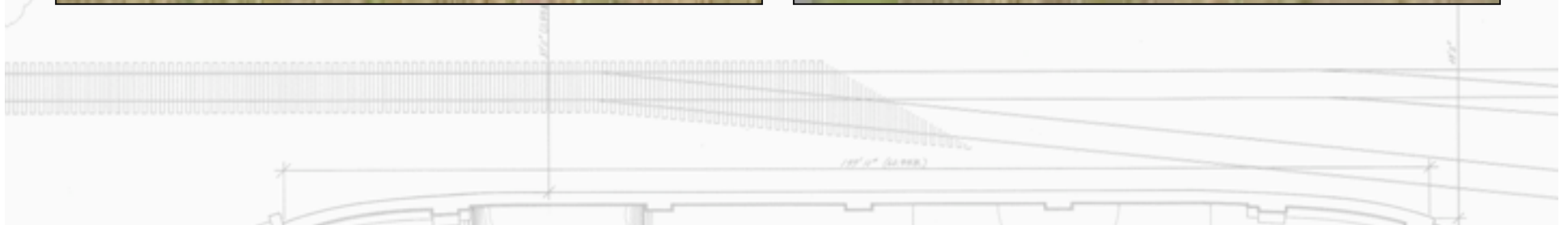
The same area after cleanup.

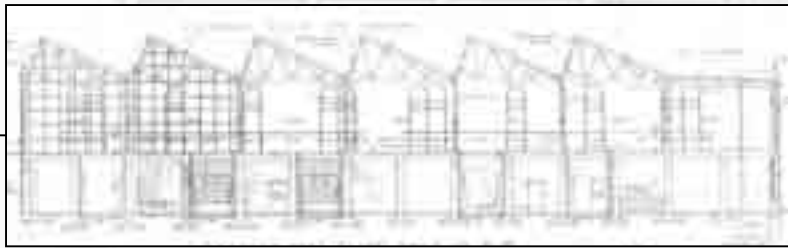




Viaduct

Area behind the Savannah History Museum after clearing.





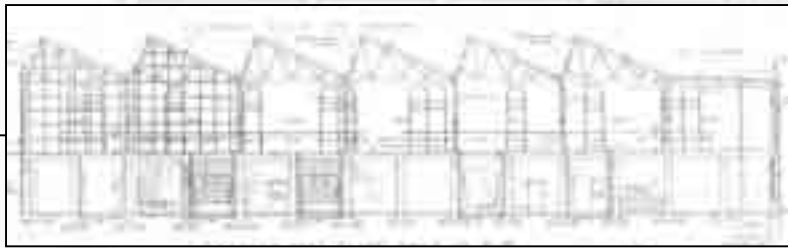
Coach & Paint Shops



CHS and Winter Construction work together to install barriers to retain soil between the Coach Shop and Paint Shop Basement.



Winter Construction completes soil removal along east wall of Paint Shop basement.



Coach & Paint Shops

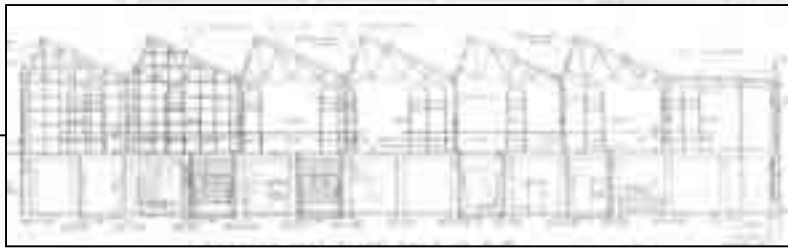
CHS installs earthen ramp between Coach and Paint Shops, allowing heavy construction equipment to enter the building for further preconstruction work.



Coach & Paint Shops



Recording of Savannah Grey Brick foundation in Paint Shop basement that may be related to a late 19th century RR structure.



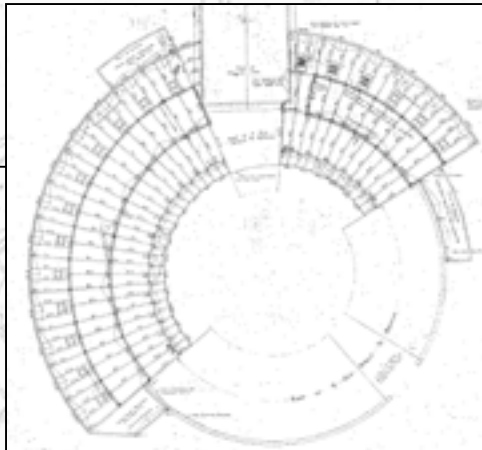
Coach & Paint Shops

CHS Preservation team repairs buttresses on east wall of Paint Shop basement.



Roundhouse

Windows

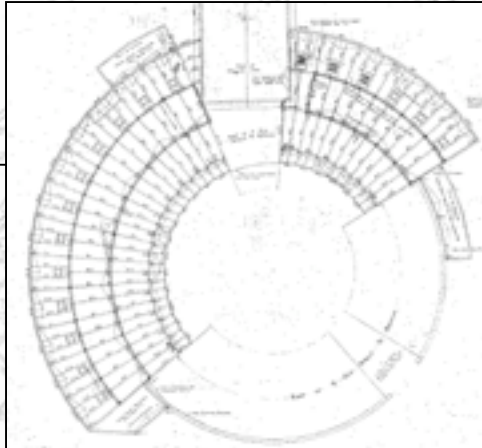


The finished product.

DETAILS OF CAST IRON
RAIN CONDUCTORS.
SCALE 3/4"=1'-0"

White Washroom

Roof



Hyrdostop was applied to the top of the White Washroom.



Before

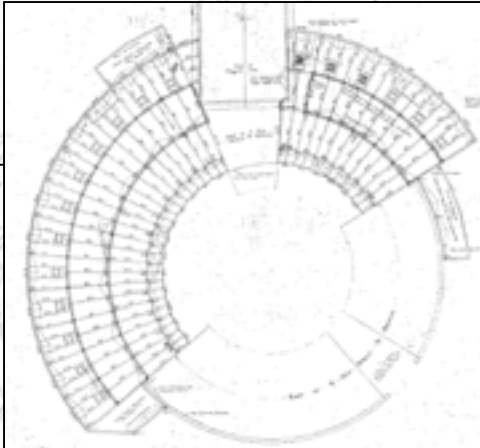


After

RAIN CONDUCTOR TYPE A.

DETAILS OF CAST IRON
RAIN CONDUCTORS.
SCALE 1/4" = 1'-0"
SEE SPEC. #12 FOR CAST IRON
RAIN CONDUCTORS IN COLORED
LAVATORY ROOM.

Overnight Shed



Jeanne and Billy replace missing fiberglass from the top of the overnight shed.



RAIN CONDUCTORS.
SCALE 3/4"=1'-0"