

Roundhouse Railroad Museum

CHS Preservation Team Projects

April 2006



HAER NO. GA-1-1



Tender Frame Shop

Finishing Touches.

Amy Verbeek helps with the finishing touches of the Preservation Team's new office space by painting the entrance door and placing carpet in the lobby.



⊖ SOUTH ELEVATION - BLDG. "C"
SCALE: 1/8" = 1'-0"

⊕ NORTH ELEVATION
SCALE: 1/8" = 1'-0"

RENOVATED BRAKE SHOP



Tender Frame Shop

The Finished Product.



Finished kitchenette



New shower was installed.



Stairway to the conference room was completed.



Tender Frame Shop

The Finished Product.



Before restoration work started.



After work was completed.

⊕ SOUTH ELEVATION - BLDG. "C"
SCALE: 1/8" = 1'-0"

⊕ NORTH ELEVATION
SCALE: 1/8" = 1'-0"

RENOVATED BRAKE SHOP

Tender Frame Shop

The Finished Product.



Before

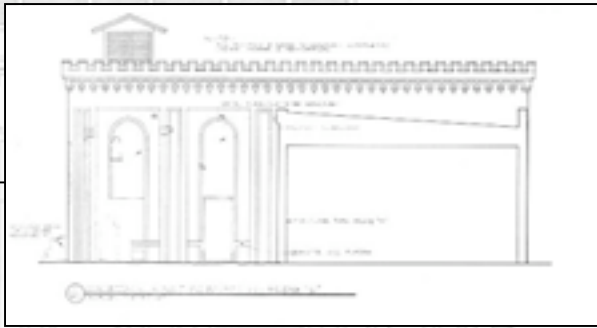


After

⊕ SOUTH ELEVATION - BLDG. "C"
SCALE: 1/8" = 1'-0"

⊕ NORTH ELEVATION
SCALE: 1/8" = 1'-0"

RENOVATED BRAKE SHOP



Compressor Room

Repointing and Stabilization.



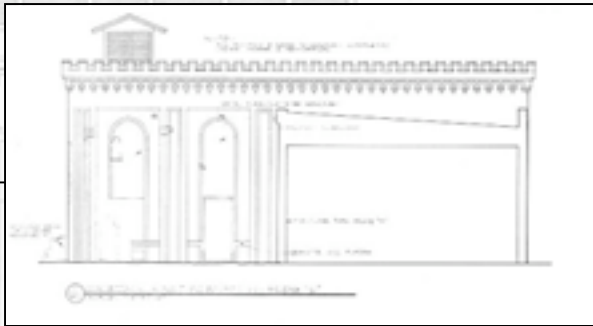
A large crack has formed in the eastern wall of the Boiler House.



One point in the crack is measured at four inches.



A faulty gutter system contributes to the mortar deterioration and wood rot along the edges of the Boiler House and Compressor Room.



Compressor Room

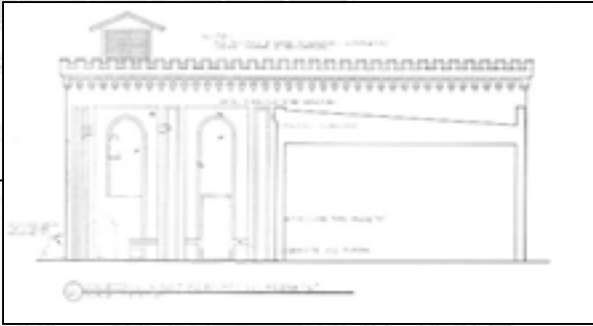
Repointing and Stabilization.



The CHS Preservation Team wrapped damaged boards to keep further rot from occurring. A Dutchman repair can be seen on the bottom of the rafter in the foreground.



View of original rafters located below the cricket roof before major epoxy repairs and scarf-jointed replacement boards are inserted.



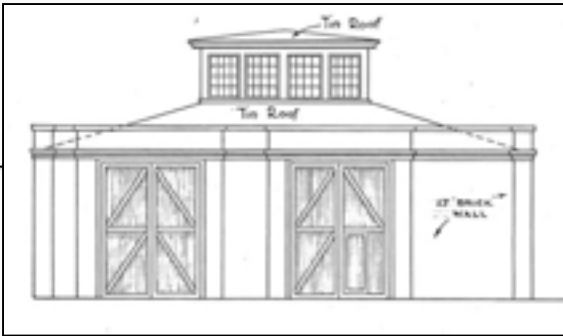
Compressor Room

Repointing and Stabilization.



Close-up view of one of the scarf joint repairs. Another board was sistered to the scarf-jointed rafter for additional support.

The CHS Preservation Team has made scarf-joint repairs to the rafters.



Carpentry Shop

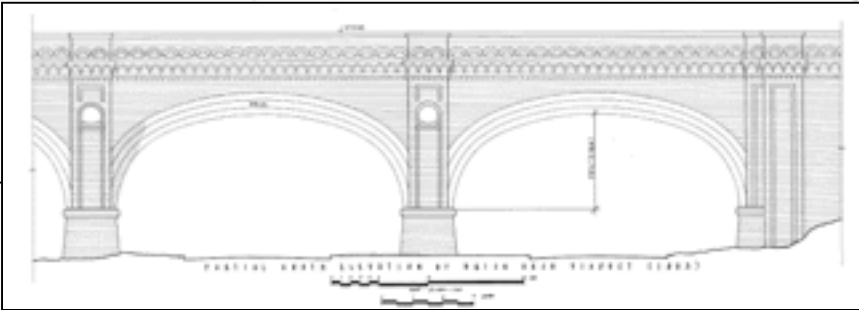
The north end of the carpentry shop wall is currently being repointed.



2 AS GROUND SECTION THRU BUILDING 'A'
SCALE 1/4" = 1'-0"

3 AS PARTIAL ELEV. E. PARAPET
SCALE 1/4" = 1'-0"

ORIGINAL

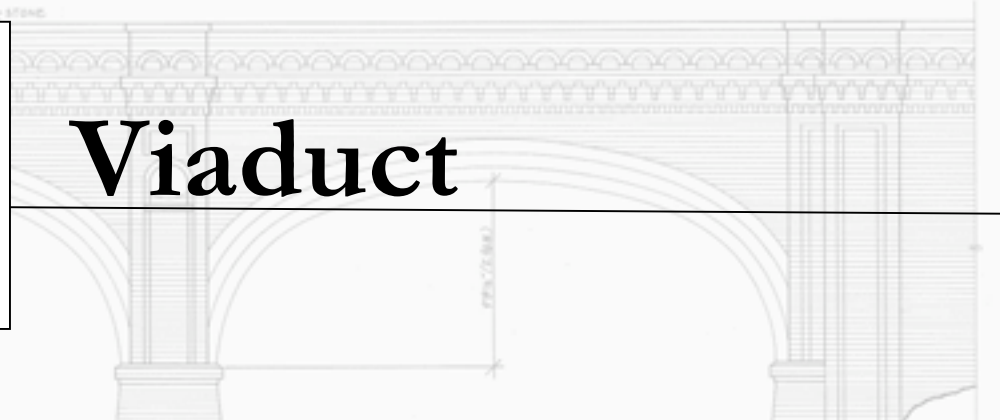
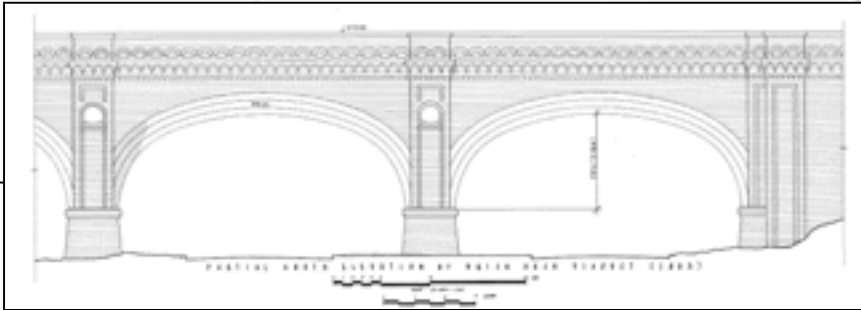


Viaduct

View looking towards the Visitors Center from west end of viaduct. The CHS Preservation Team has cleared a large portion of the area.



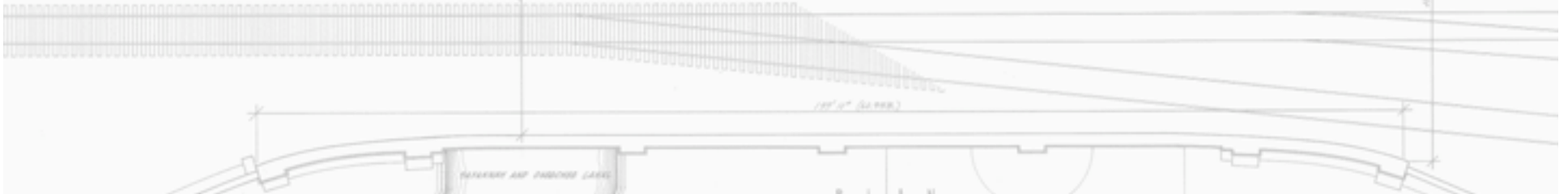
Viaduct



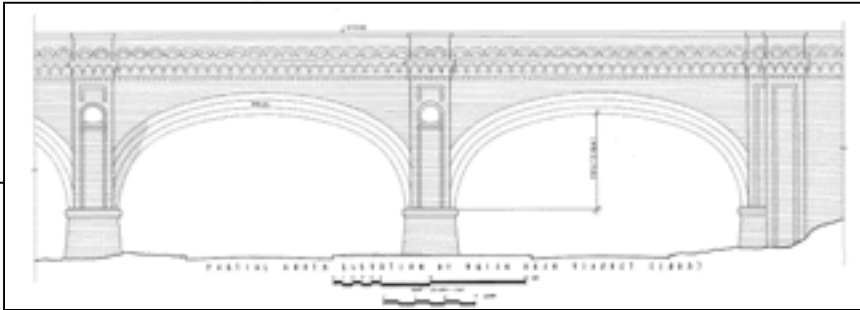
Amy Grace stands in an area cleared by herself and fellow Preservation Team members.



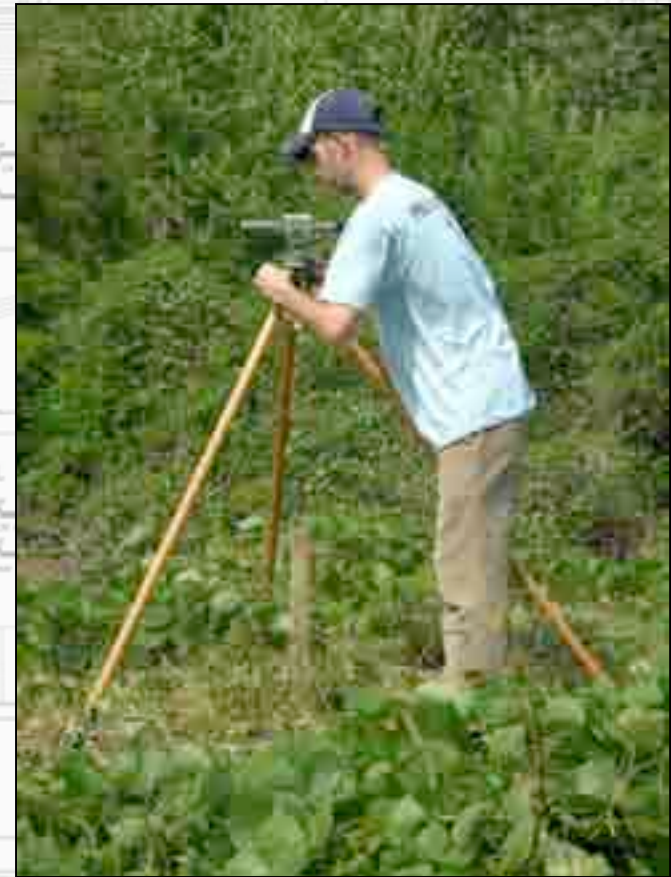
View from viaduct looking west towards I-16. The Preservation Team has cleared this area.



Viaduct

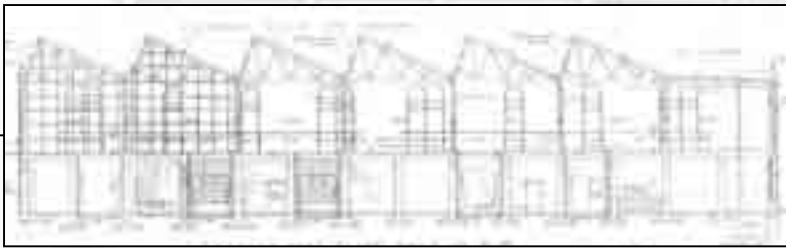


View of cleared area looking west towards I-16.



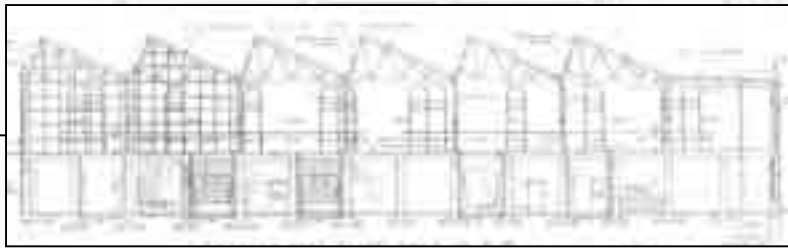
Eric Davenport surveys the viaduct.

Coach & Paint Shops



Jess King applies epoxy to one of the Paint Shop doors that is currently being restored.

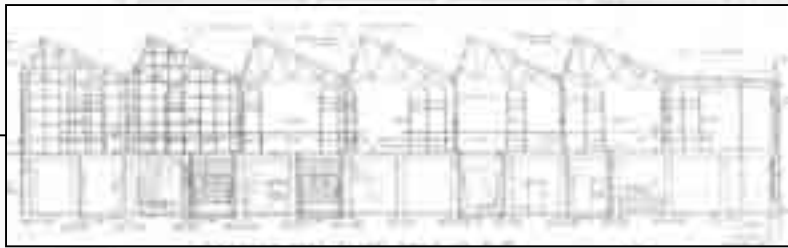




Coach & Paint Shops



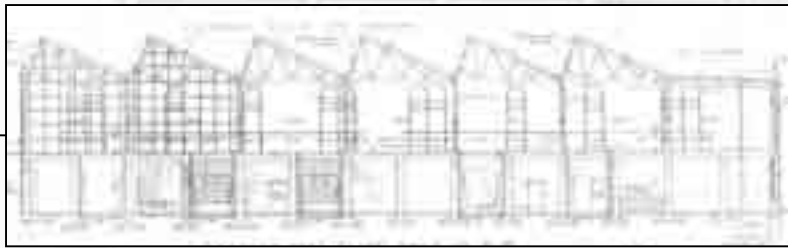
Amy Grace and Jeremy Bloomfield remove the steel window frames to start the next phase of window restoration at the Coach and Paint Shops.



Coach & Paint Shops

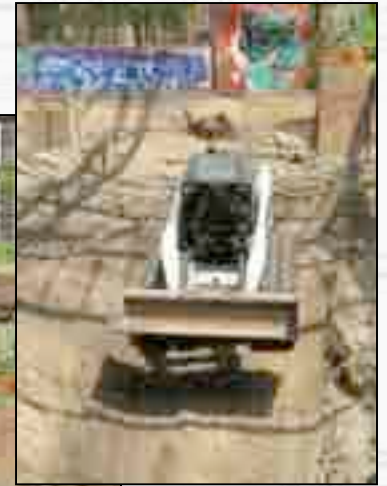
The CHS Preservation Team continues making steel repairs to the Paint Shop.

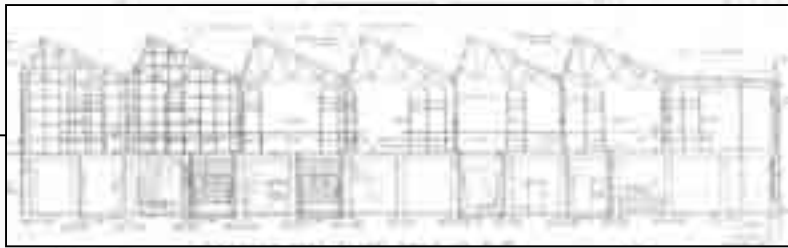




Coach & Paint Shops

Jeremy Bloomfield makes a ramp into the basement of the Paint Shop, allowing easier access for upcoming restoration work.

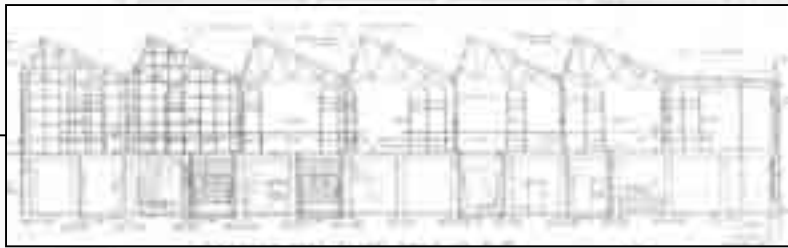




Coach & Paint Shops

The CHS Preservation Team unearthed the foundation of the Paint Shop heating unit for documentation of historic elements and in preparation for future construction work.

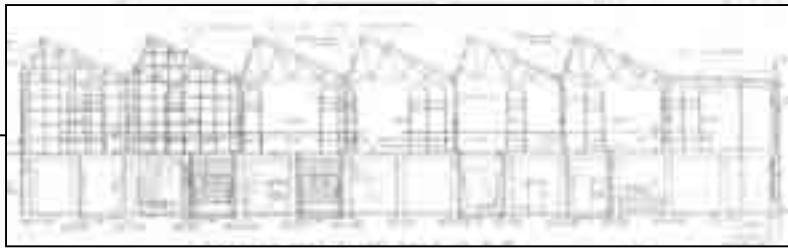




Coach & Paint Shops

Views of the heating unit and its foundation.





Coach & Paint Shops

A wall in the basement of the Paint Shop was removed to facilitate preconstruction activities related to the heating unit.

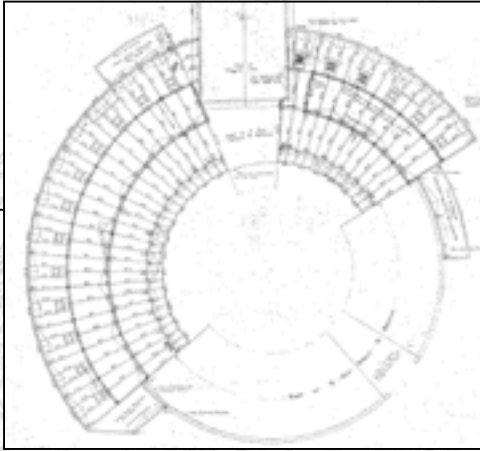


View of the wall before it was removed.



After.

Woodblock Floors



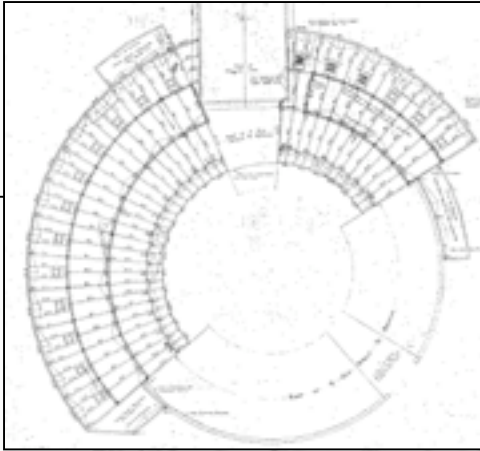
Replacement woodblocks are being stored in the Paint Shop.



Present woodblocks are removed to make test patches before the full restoration process begins. Various mastics and sealers are being tested.

DETAILS OF CAST IRON
RAIN CONDUCTORS.
SCALE 1/4" = 1'-0"
SEE DRAWING #12 FOR CAST IRON
RAIN CONDUCTORS IN COLORED
LAUNDRY ROOM.

Woodblock Floors



Views of several test areas.



Bill Hersch removes the original woodblocks to prepare the area for testing.





Visitors Center



The interior plaster wall of the Visitors Center was cracking and delaminating due to moisture from the downspout. Travis Brown and Jeanne Fullam repointed areas behind the downspout and repaired seams of the gutter.





Visitors Center

More views of the area behind the downspout that Travis and Jeanne repointed.

