



Coastal Heritage Society

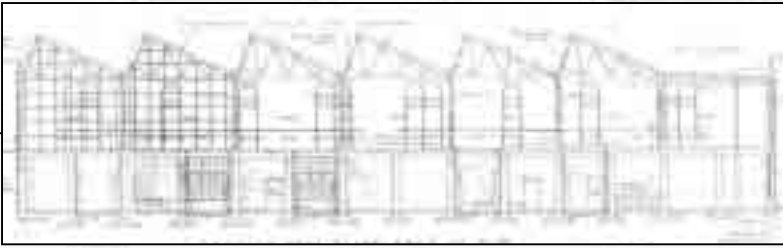
Savannah History Museum • Roundhouse Railroad Museum • Old Fort Jackson

Preservation Team • Railroad Operations • Archaeology

June 2007



Front façade of Blacksmith Shop, 1976. Library of Congress, Prints and Photographs Division, Historic American Engineering Survey, Photo by Jack Boucher



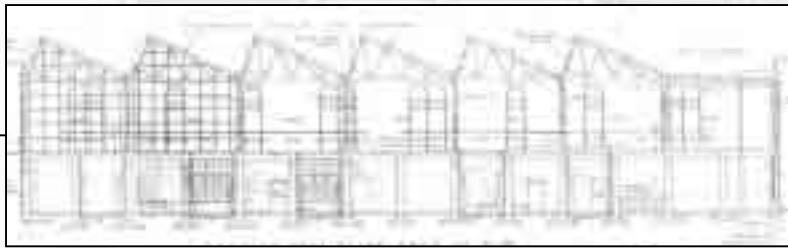
Paint Shop 1925

Roof Repairs

Preservation Team members continue working on the initial phase of sawtooth roof work at the east end of the building.

Kurt Benton and Jeanne Fullam install a cricket roof on the Paint Shop. This will help drain water from the roof.





Paint Shop 1925

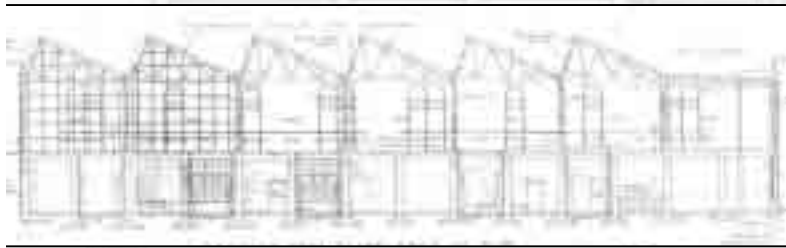
Preservation Team members Kevin MacMillan and John “Chico” Passmore recently removed the shelves in the Paint Shop storage room after they were fully documented by CHS design team member Eric Pettingil.



Kevin and John start by taking out the metal backing.



After loosening the screws, Kevin and John take the remaining structure down.



Paint Shop 1925

The shelf unit had a structural system of steel bars that supported wooden shelving. The lower 4 lengths of wooden shelving was covered with galvanized metal sheets.



October 2006



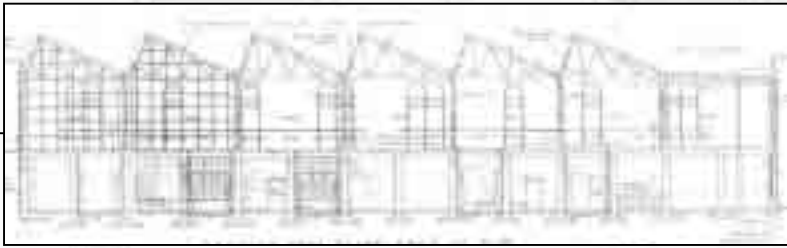
Storage shelves in October 2006. Since then graffiti has been removed from areas of the room.



A good example of the building's original paint color scheme of bottle green at the four-foot wainscot and white above was revealed after the shelves were removed.



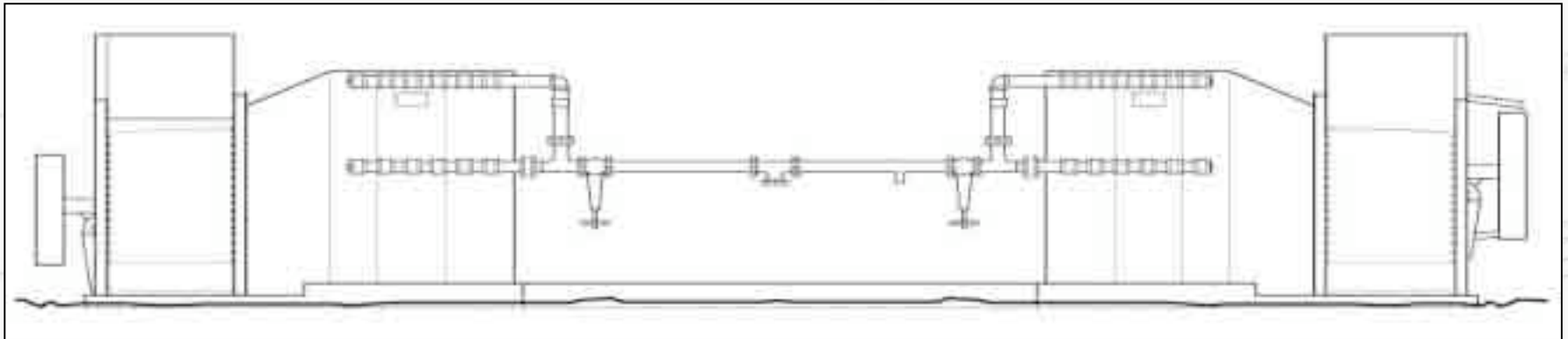
During removal



Paint Shop 1925

Documentation of Historic Building Elements

The CHS design team has been documenting historic building elements in the Paint Shop in accordance with Historic American Building Survey (HABS) standards. After completion, CHS intends to donate copies of the plans to the HABS collection, which are housed in the Library of Congress. The HABS collection documents achievements in architecture, engineering, and design in the United States.



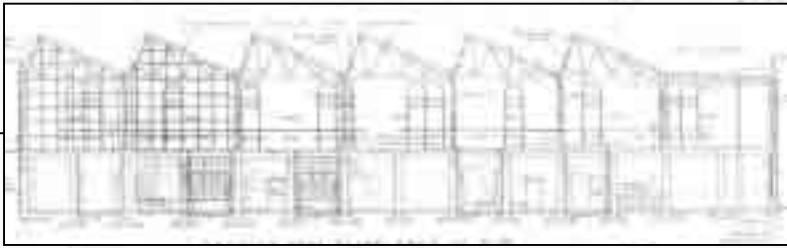
Sirocco heat unit system as documented by the CHS design team

The CHS design team recently finished documenting the Sirocco heat unit system. After it was completely documented, the unit was removed from the basement.

View of Sirocco heat unit system before it was removed from the basement.



Photo by Ryan Munch



Paint Shop 1925

Documentation of Historic Building Elements

A dust collector in the basement of the Paint Shop was recently documented by the CHS design team. The dust collector was historically used to collect dust from the picking room, where textiles were processed. The dust collector was manufactured by Buffalo Forge Co., located in Buffalo, NY. Buffalo Forge Co. is still going strong as part of Howden-Buffalo, Inc. and is a leader in fan engineering today. The galvanized metal blowpipe system (shown below) was locally made by Savannah Blowpipe Co, a predecessor of Great Dane Trailers.



Floor plan showing location of dust collector in the basement of the Paint Shop.

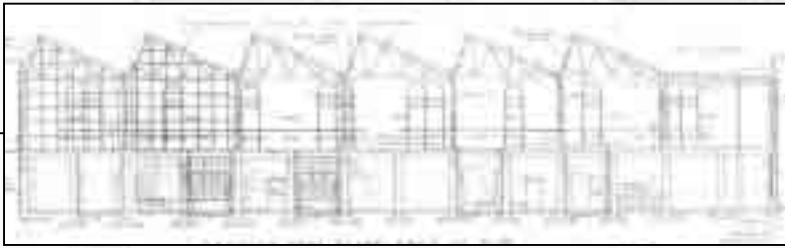
Jennifer Taylor sketches a rough outline of the dust collector before taking measurements.



Manufacturer's plaque found on dust collector.



Manufacturer's stamp found on blowpipe.

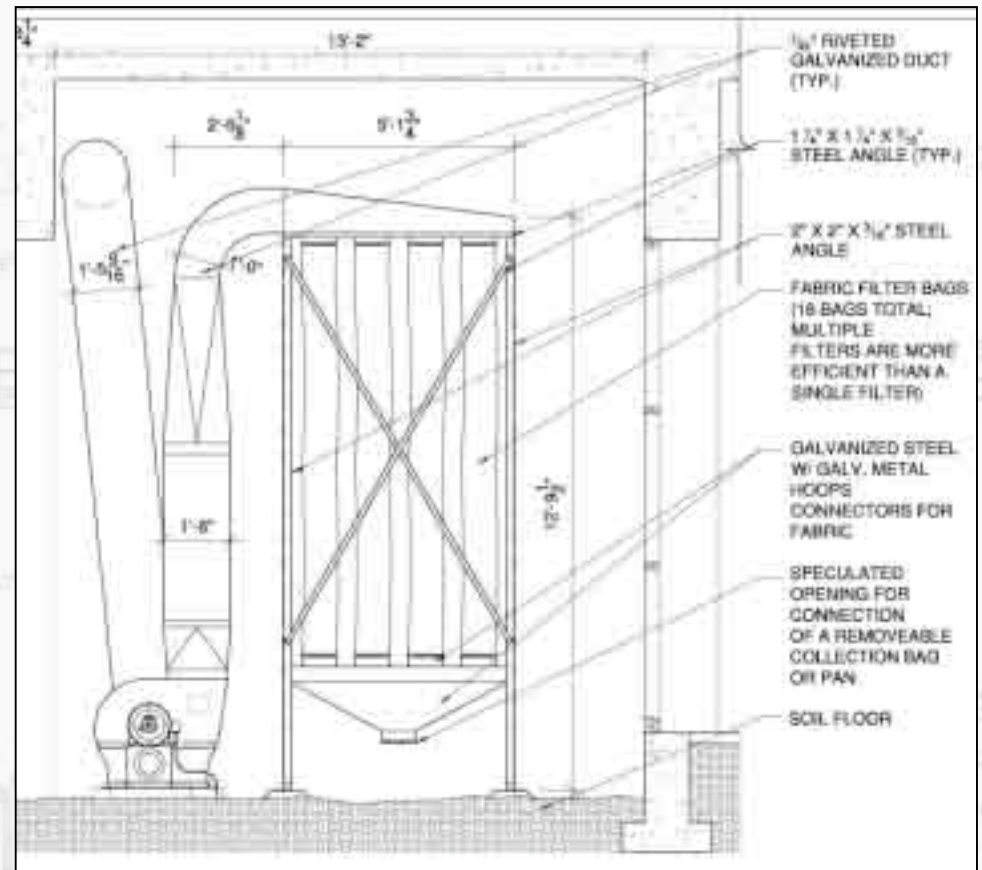


Paint Shop 1925

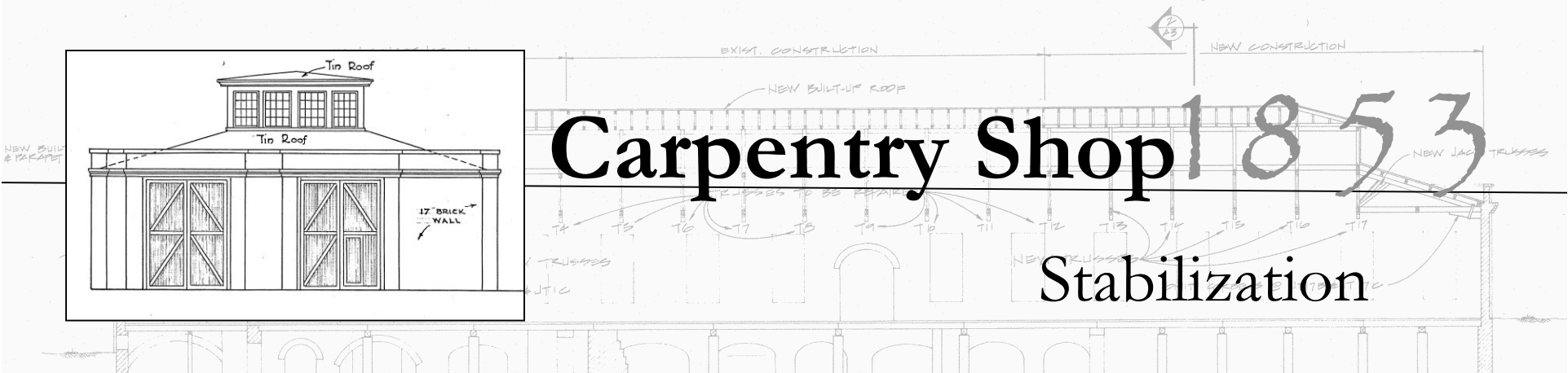
Documentation of Historic Building Elements



Jennifer Taylor documents the base of the dust collector.



Plans of the dust collector as documented by the CHS design team.



Carpentry Shop 1853

Stabilization



View of foundation arches shortly after masonry restoration began. Most areas were severely deteriorated and unstable.



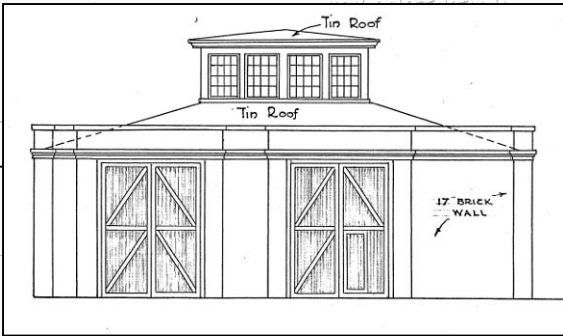
Current view of foundation arches that have been restored and rebuilt.

2 CROSS SECTION THRU BUILDING 'I'
SCALE: 1/4" = 1'-0"

3 PARTIAL SECT. @ PARAPET
SCALE: 1" = 1'-0"

Carpentry Shop 1853

Stabilization



Top portion of foundation arches shortly after masonry restoration began.

Current view of repaired and rebuilt foundation arches.

PROVIDES COPPER WIRE STRAINER W/ 24 GA MET. PAN @ EACH D.S.

20 YR. BUILT-UP ROOF EXIST. SHEATHING ON ROOF DAMAGED OR ROT ECONOMY GRADE PAINT W/ TWO (2) COATS OF GIVE AN (1) CO. OF (1) 1/2\"/>

EXIST. CONC IN PLACE W/ REBAR & SILLANT

NEW PARAPET WALL FINISH

FIBER GAIT

WD. HEAL

WD. CORNER

ORIGINAL

2-A3 CROSS SECTION THRU BUILDING I

2-A3 PARTIAL SECT. @ PARAPET

Compressor Room

1855

The Preservation Team recently repaired and repointed the front façade of the Compressor Room.

Masonry Restoration



The front façade was in need of repointing and vegetation removal

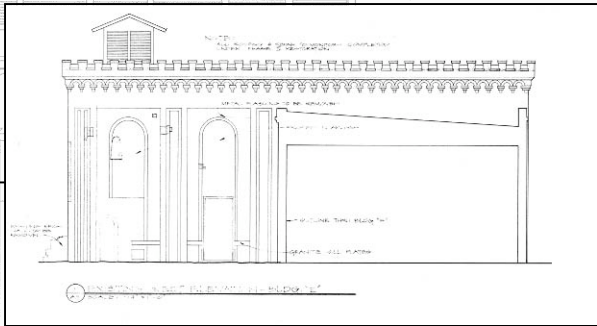


After masonry repairs. The Preservation Team used mortar mixed with Savannah River sand, similar to the lime mortar composition in the original construction.

Compressor Room

The masonry on this façade will now be stable and without need of repair for another 50-100 years.

1855



Masonry Restoration

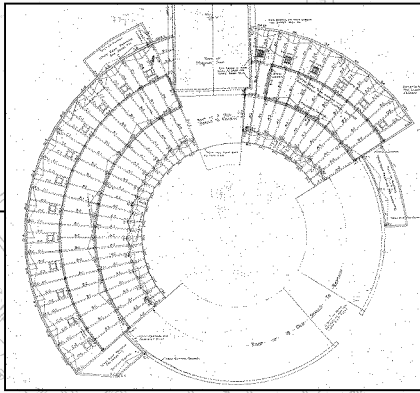


Before

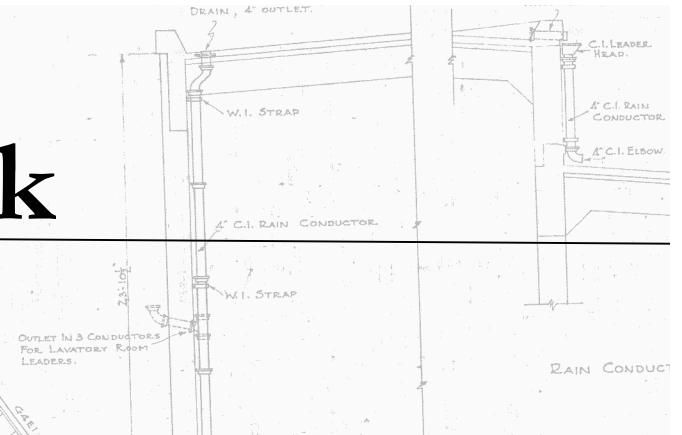


After

Site Work



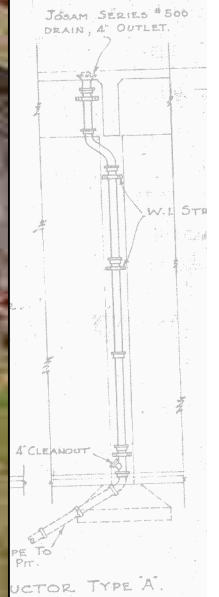
After a geothermal system was installed along Purse Street, CHS Preservation Team members delineated walking paths with gravel and laid sod.



View during installation of geothermal system.



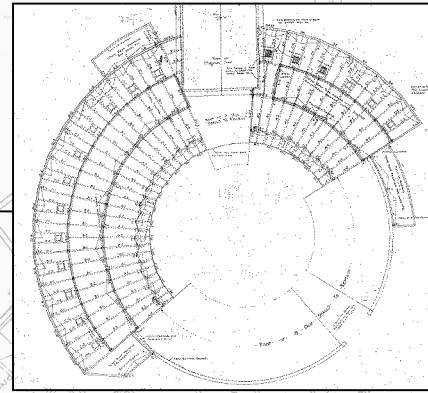
After site work was completed.



DETAILS OF CAST IRON RAIN CONDUCTORS.
SCALE 1/2" = 1'-0"
SEE SHEET #12 FOR CAST IRON RAIN CONDUCTORS IN COLORED LAVATORY ROOM.

Turntable

RR Operations member B.J. Simms recently cleaned the turntable pit of overgrown vegetation that had accumulated over time.



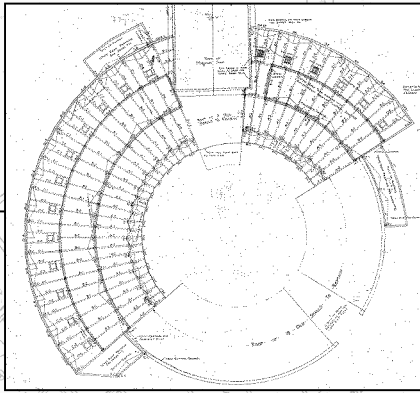
Before vegetation was removed.



After

DETAILS OF CAST IRON
RAIN CONDUCTORS.
SCALE 1/2" = 1'-0"
SEE SHEET # 12 FOR CAST IRON
RAIN CONDUCTORS IN COLORED
LAVATORY ROOM.

Louisville Road Retaining Wall



Preservation Team members cleared vegetation from the retaining wall along Louisville Road to facilitate future masonry repairs.

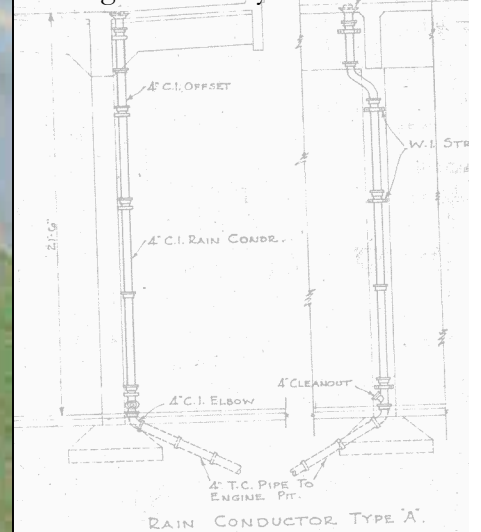


Aerial view of retaining wall overgrown with vegetation.



After all vegetation is removed, masonry repairs will follow.

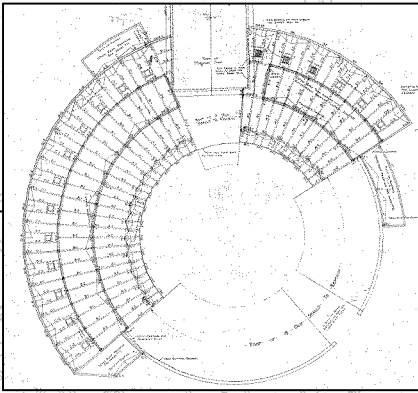
Preservation Team members clear vegetation away from the wall.



DETAILS OF CAST IRON RAIN CONDUCTORS.
SCALE 1/2" = 1'-0"
SEE SHEET # 12 FOR CAST IRON RAIN CONDUCTORS IN COLORED LAVATORY ROOM.

Dispatch Office

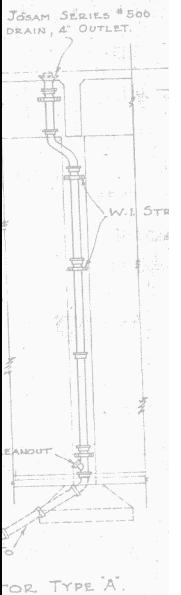
Preservation Team members are currently repairing and repointing masonry on the north façade of the Dispatch Office. The masonry crew is repointing and repairing cracks in order to stop water infiltration.



Scaffolding was set up for masonry repairs outside the main entrance of the gift shop.

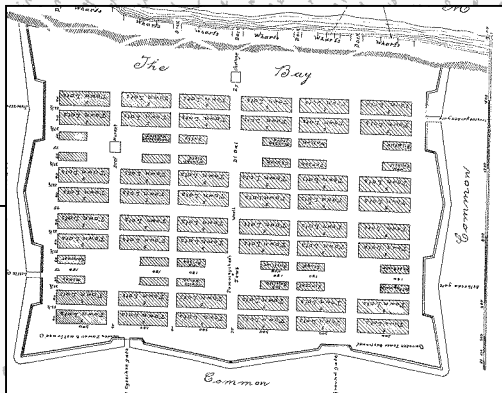


Using tungsten-tipped chisels, Brandi Hayes, Katie Purcell and Megan Kelly repair cracks in the mortar joints.



DETAILS OF CAST IRON RAIN CONDUCTORS. SCALE 1/2"=1'-0"
SEE SHEET #12 FOR CAST IRON RAIN CONDUCTORS IN COLORED LAVATORY ROOM.

Plan of the City SAVANNAH and Fortifications



(parallel with the Bay) by a Lane 22 1/2 feet
half Riding consists of four contiguous Lots, a
as well as four detached Lots in front, and
depth. Twelve Lots are from each other a
the Riding Lots by 50 ft. and 37 1/2 ft. wide. The 6
400 Houses a Blunder independent Section
Council, as a Court, and a Pilot.
of the Lots at the Bay are 30 feet above
of the Street, or rather the Springs under
Sand, on this whole, a near Sand
general average in the Sand.

Battlefield Park 1779

Views of progression



November 2006



April 2007



May 2007

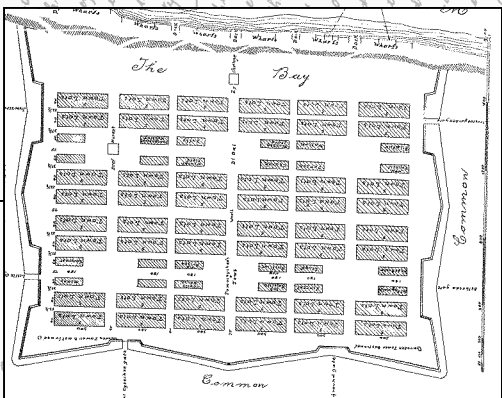


July 2007

Enlarged Copy of a Plan of the City of Savannah with additional Fortifications in the year 1757 contained in the History of the Province of Georgia, to which reference has already been made.

Chas. C. Miller
1875

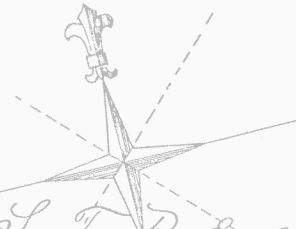
Plan of the City SAVANNAH and Fortifications Common



(parallel with the Bay) by a Lane 22 1/2 feet as well as 'Narrow Lane' in front, and depth, 'Narrow Lane' are from each other a the 'Diving Lots' by 100 ft. and 3 1/2 ft. wide. The 6 400 Houses, a Church, independent 'Meditation' Council House, a Court House, and a Jail are of the City as at the 'The Bay' 30 feet above of the 'Street' or 'water' level. Springs under Sand, and this whole a 'major Sand' general Springs in 'The Bay' Sand.

Battlefield Park 1779

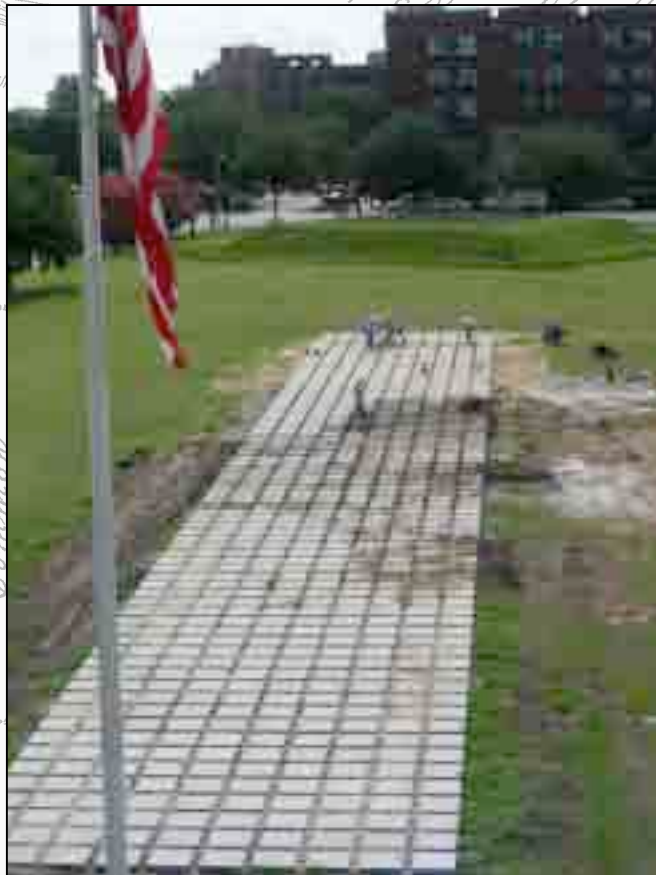
Mr. P. Mill



Wharfs

Fortifications in the 'orgia' to which

TRACED FROM PLAN OF THE CITY IN OFFICE OF CITY ENGINEER BY J. A. HUNTER JAN. 14, 1929 IDENTIFIED BY R. W. WILSON



Current view of completed memorial walk.

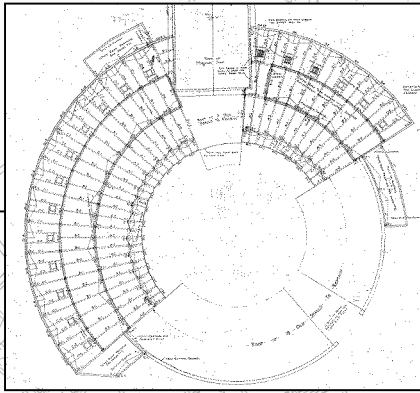
Profile upon

Enlarged year 1757

1757

Preservation Team members as they neared completion of the memorial walk.

Behind-the-Scenes Hard Hat Tours

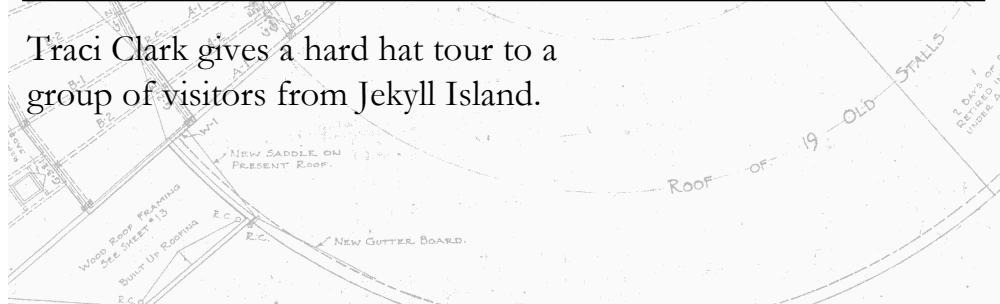


Members of the Preservation Team have been giving visitors hard hat tours to visitors of the Roundhouse complex.



Traci Clark gives a hard hat tour to a group of visitors from Jekyll Island.

A news crew from WJCL filmed multiple live shots of activities that can be seen on the tour. Kevin Adams explains why hard hats are necessary to wear on the tours.



DETAILS OF CAST IRON RAIN CONDUCTORS. SCALE 1/2" = 1'-0" SEE SHEET # 12 FOR CAST IRON RAIN CONDUCTORS IN COLORED LAVATORY ROOM.

All Aboard for Steam Days

The CHS Railroad Ops team performed steam demonstrations for visitors at the Roundhouse complex during their first annual Steam Days. Many visitors came to see the recently restored steam engine #30 being fired up.



The RR Ops team starts the morning early by firing up the historic steam engine.



Gaylord Hanson prepares the engine.

4" T.C. PIPE TO ENGINE PIT.
RAIN CONDUCTOR TYPE 'A'.

DETAILS OF CAST IRON
RAIN CONDUCTORS.
SCALE 1/4" = 1'-0"
SEE SHEET # 12 FOR CAST IRON
RAIN CONDUCTORS IN COLORED
LAVATORY ROOM.

