



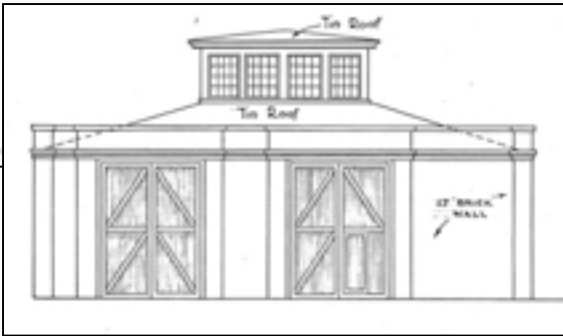
Coastal Heritage Society

Visitors Center • Roundhouse Railroad Museum • Old Fort Jackson

Preservation Team Projects

June 2006





Carpentry Shop

Archaeology

Curator of Exhibits and
Archaeology, Rita Elliott, and
Artifacts Collections

Technician, Kevin Adams,
perform an archaeological
study of the area under the
arches of the north wall before
they are permanently sealed.



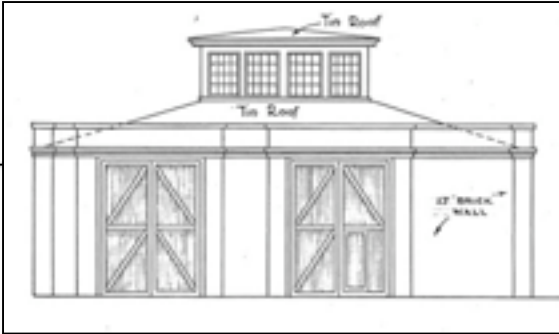
② CROSS SECTION THRU BUILDING 11
SCALE 1" = 1'-0"

③ PARTIAL ELEV. E. PARAPET
SCALE 1" = 1'-0"

Carpentry Shop

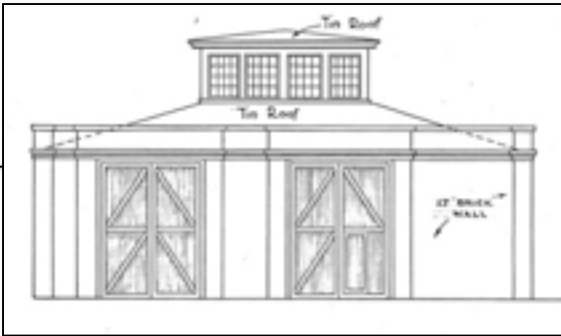
Archaeology

Rita makes notes of their findings, while Kevin sifts through soil for artifacts.



Carpentry Shop

Archaeology

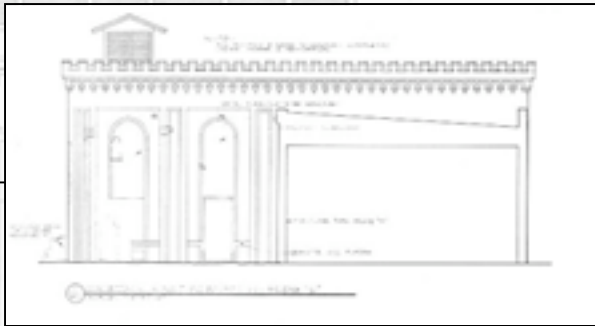


An east-west oriented foundation was unearthed during Rita and Kevin's investigation.



GROUND SECTION THRU BUILDING '1'
SCALE 1/4" = 1'-0"

PARTIAL GROUND SECTION
SCALE 1/4" = 1'-0"



Compressor Room

Structural Roofing

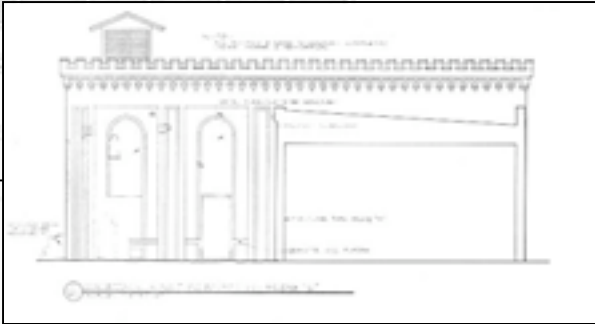
The CHS Preservation Team has been repairing rafters of the Compressor Room, reusing the historic rafters when possible and replacing the others in kind.



View of rafter suffering from water and termite damage before repairs were done.



View of historic rafter with new sill and modified Dutchman repair. Masonry surrounding the rafter was also repaired.



Compressor Room

Repointing



The CHS Preservation Team is currently repointing the north wall of the Compressor Room.



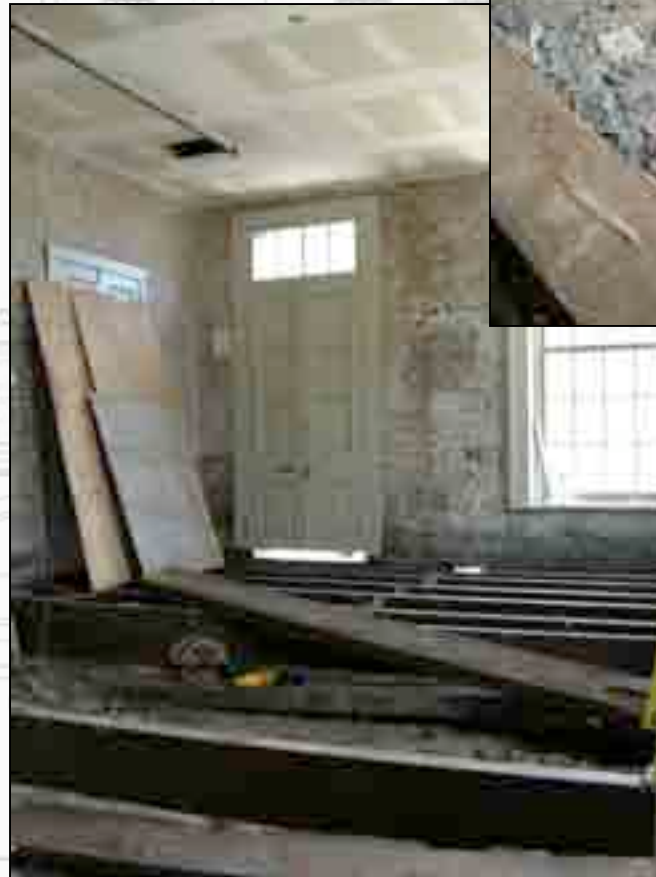
After digging out deteriorated mortar from the wall, Lissa Schwab rinses it away before repointing.



Tender Frame Shop

Floor Repair

Jeanne Fullam and Chris Fisher continue to repair the floor joists on the first floor of the Tender Frame Shop.



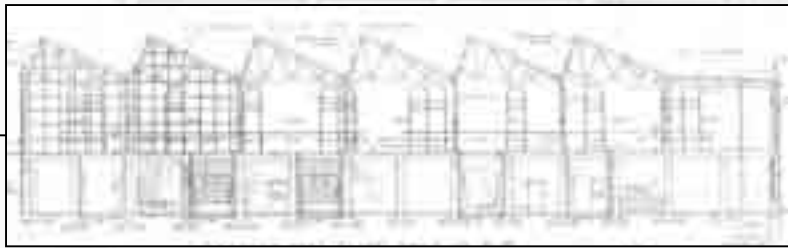
View of fragments of glass bottles found under the Tender Frame Shop floor.



Glass bottles were found under the Tender Frame Shop floor.

NORTH ELEVATION
SCALE: 1/8" = 1'-0"

RENOVATED BRAKE SHOP

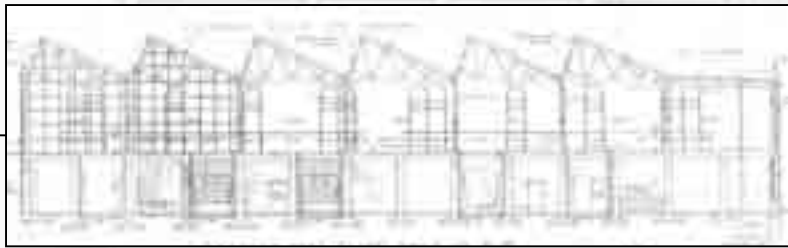


Coach & Paint Shops

Door Restoration

The CHS Preservation Team removed the historic doors of the Coach Shop in order to restore them.

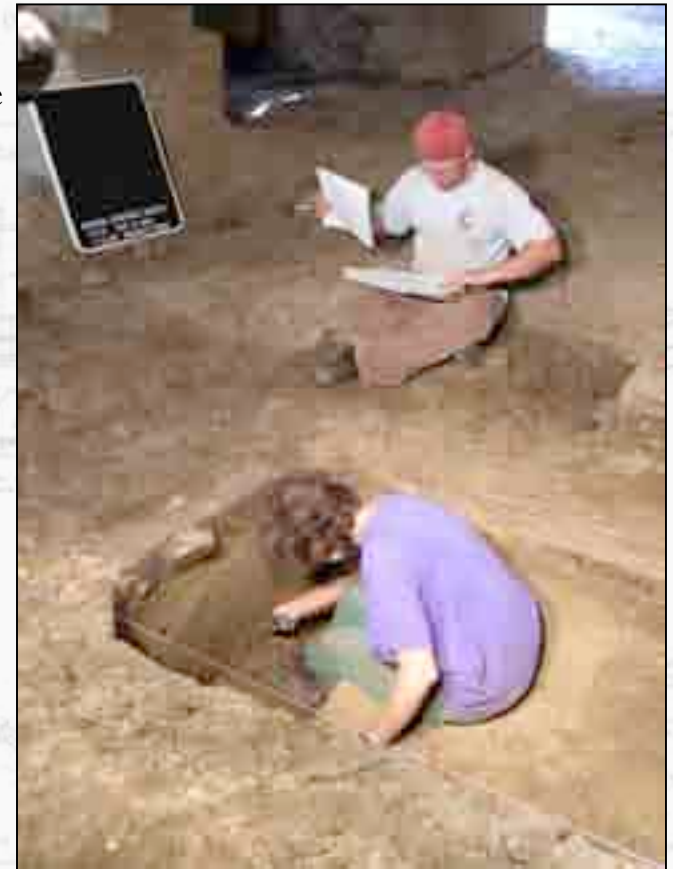


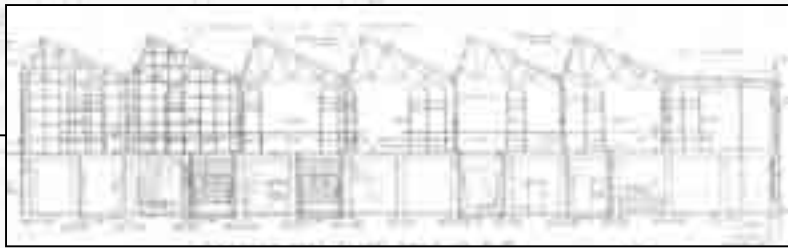


Coach & Paint Shops

Archaeology

Before a French drain is installed in the basement of the Paint Shop, Rita Elliott, Curator of Exhibits and Archaeology, and Kevin Adams, Artifacts Collections Technician, perform an archaeological dig to investigate the construction of the historic sewage line and foundation of what appears to be the former lavatory.





Coach & Paint Shops

Vegetation Remediation

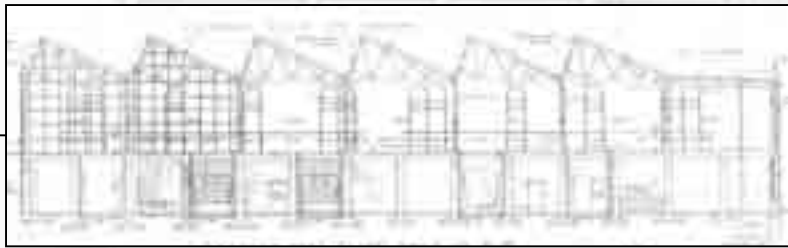
Plant life is growing on the exterior and interior of the Paint Shop. Project Manager, Patricia Davenport, is currently taking actions to kill and remove it.



Exterior West Wall



Interior West Wall



Coach & Paint Shops

Vegetation Remediation

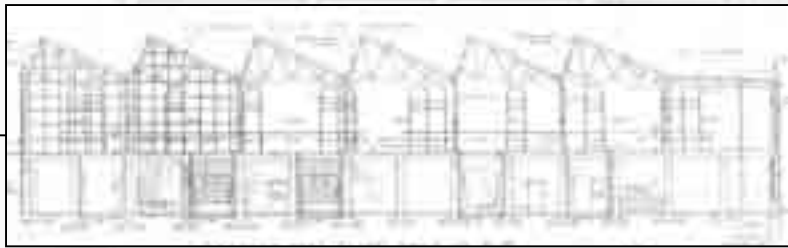


First, Patricia, makes a solution that will ultimately kill the plants' root systems.



The next step involves inserting a few of the plants' stems into the solution-filled tubes. Over time, the plant will absorb the solution, eventually killing the root system.





Coach & Paint Shops

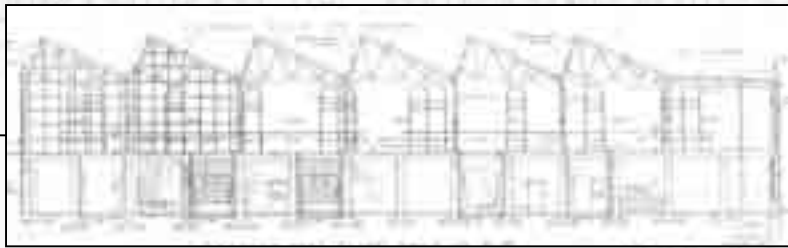
Vegetation Remediation



Patricia inserts stems of plants growing on the interior of the Paint shop into the solution-filled tubes.



Patricia shows the dead root system of a plant that has already absorbed the solution.



Coach & Paint Shops

Graffiti was removed from the northwest corner of the Paint Shop.

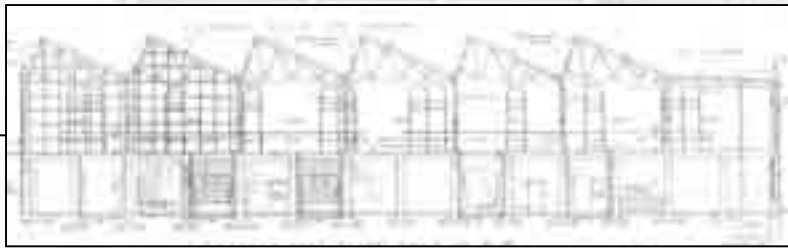
Graffiti Removal



First, paint stripper was applied to the graffiti. A day later, the graffiti was rinsed away from the wall.



CHS Preservation Team member, Jason Cobb, applies a coat of paint stripper to the graffiti.



Coach & Paint Shops

Graffiti Removal



Before

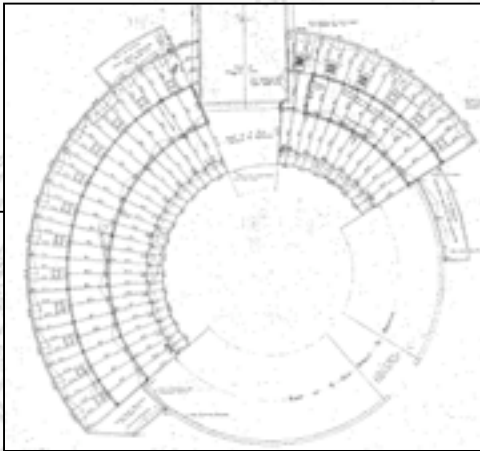


After

Woodblock Floors

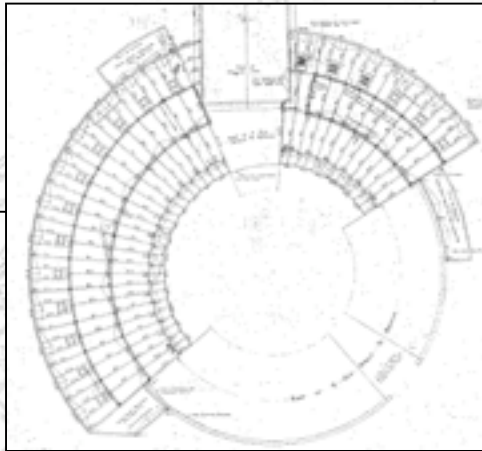
Restoration

The CHS Preservation Team has been restoring the historic woodblock floors of the Roundhouse under the guidance of team member, Bill Hersch, who is also doing his MFA thesis on woodblock floors.



Woodblock Floors

Restoration



Before

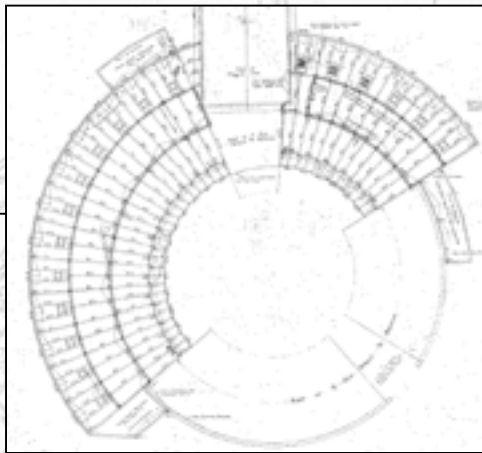


After

RAIN CONDUCTORS.
SCALE 1/4" = 1'-0"
SEE DRAWING #12 FOR CAST IRON
RAIN CONDUCTORS IN COLORED
LAUNDRY BATH.

Woodblock Floors

Restoration



Before



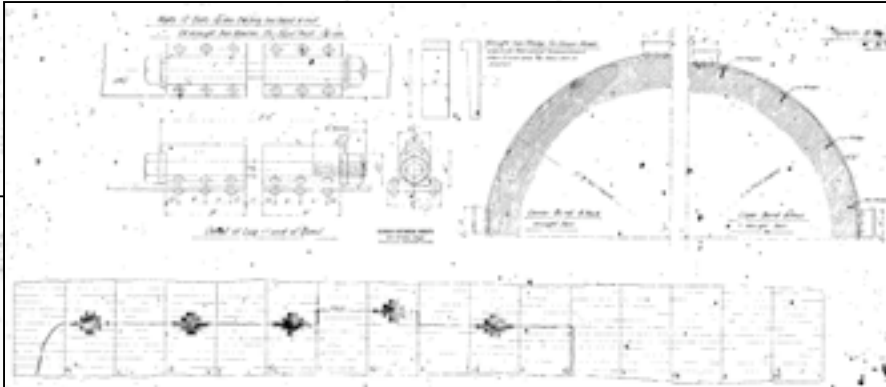
After

RAIN CONDUCTOR TYPE 'A'

DETAILS OF CAST IRON
RAIN CONDUCTORS.
SCALE 1/4" = 1'-0"
SEE SHEET #12 FOR CAST IRON
RAIN CONDUCTORS IN COLORED
LAVATORY ROOM.

Smokestack

Lighting and Stabilization



The CHS Preservation Team installed metal struts to stabilize the water tank. Lights were then attached to the struts to illuminate the historic stack at night.

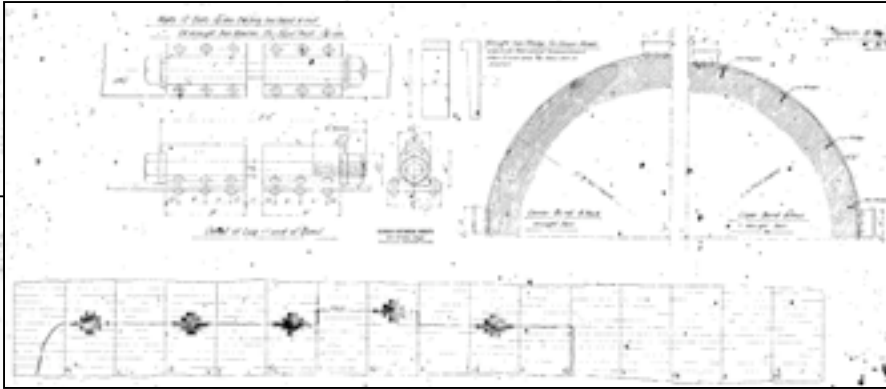


Photo by Michael Jordan

November 1902
Spirals 123-1
Chief Engineer's Office
Swannan Co.

Smokestack

Lighting and Stabilization



Repairs to Upper Circular Crack

Interior views of the historic water tank that was reinforced with metal struts.

Central of Georgia Railway Co.

Repairs to Stack, Savannah Shops.

November 1902

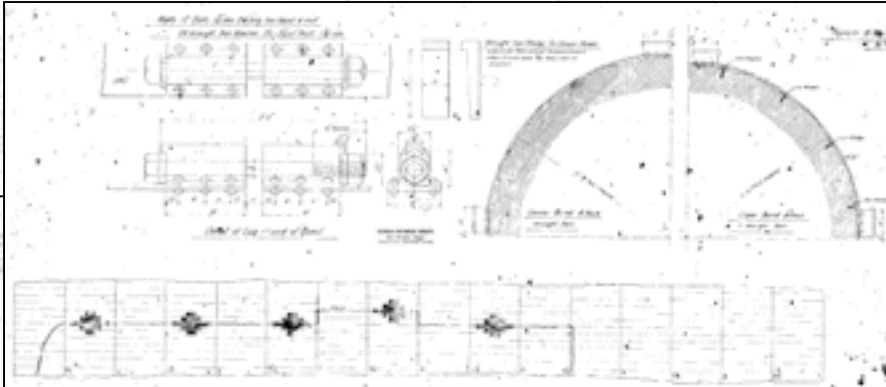
Plans '03-1

Chief Engineer's Office

Savannah Co.

Smokestack

Lighting and Stabilization



Electrical contractors installed the lights.



Repairs to Stack Savannah Ga

Central Georgia Railway Co
Repairs to Stack, Savannah Shops.
November 1902 Spans '23-1
Chief Engineer's Office
Savannah Ga.

Smokestack

The Final Product

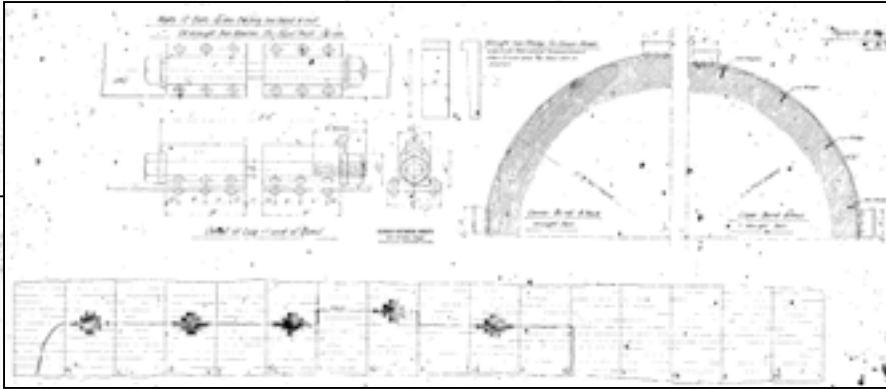


Photo by Billie Graham



Photo by Billie Graham

Chief Engineer's Office
Savannah Co.

Hands on History

Preservation Camp

For two weeks, kids from area schools took time out of their summer to learn more about historic preservation from members of the CHS Preservation Team.



Krystal Kornegay shows students how to reglaze windows.



Photo by Krystal Kornegay

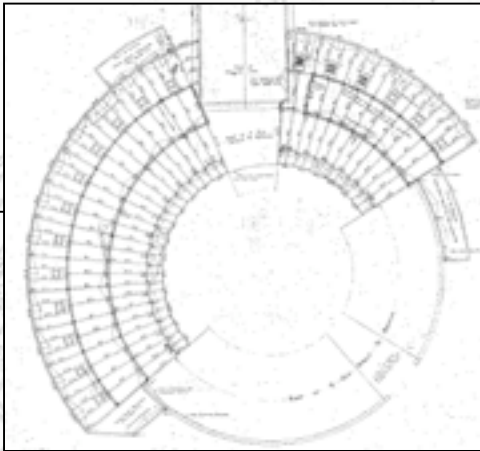
Becki Harkness explains historic paint analysis to students.

DETAILS OF CAST IRON
RAIN CONDUCTORS.
SCALE 1/4"=1'-0"
SEE DETAIL #12 FOR CAST IRON
RAIN CONDUCTORS IN COLORED
LAUNDRY BATH.

Grounds

Planting Grass

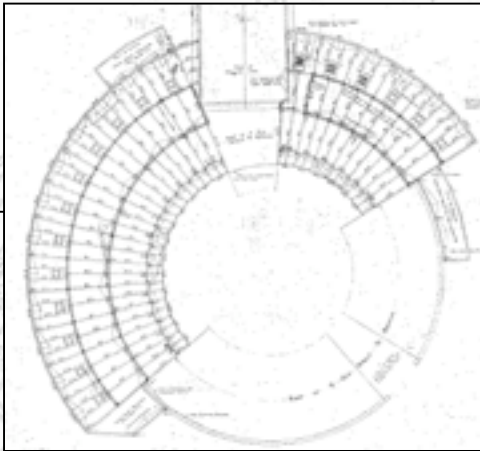
Hydroseed, a mixture of grass seed, fertilizer, and mulch was sprayed on the grounds of the Roundhouse. Soon the grounds will reflect new growth.



RAIN CONDUCTORS IN COLORADO LAVAATORY BLDG.

Grounds

Planting Grass



Chris Fisher and Ryan Griffiths install barriers to keep people from walking on the newly seeded grass.



Mya Passmore rinses hydroseed away from the walls and foundation.

DETAILS OF CAST IRON
RAIN CONDUCTORS.
SCALE 1/4" = 1'-0"
SEE SHEET #12 FOR CAST IRON
RAIN CONDUCTORS IN COLORED
LAUNDRY BATH.



Visitors Center

The former offices of the Savannah History Museum were rehabilitated into bathrooms. Work was done primarily by outside contractors with assistance from the CHS Preservation Team. Historically, these rooms served as waiting rooms.



Before



After

Close-up view of
a biscuit joint.



Visitors Center

Bathrooms



Before



After



Visitors Center

Bathrooms



Close-up view of
a discum joint



Visitors Center

The Finished Product

