



Coastal Heritage Society

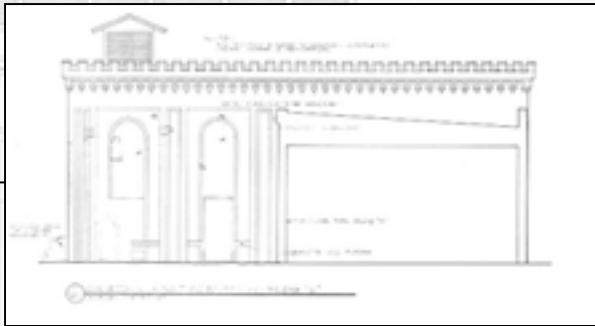
Visitors Center • Roundhouse Railroad Museum • Old Fort Jackson

Preservation Team • Railroad Operations • Archaeology

August-September 2006



Photo courtesy of the National Park Service, HAER GA-1 field photo, 1975



Compressor Room

Roof Construction

CHS Preservation Team members, Ian Ashenfelter, Nathan Harris, and Jack Tyson work to rebuild the monitor roof of the Compressor Room.



View of the roof decking as it is being repaired. The Preservation Team was able to reuse most of the existing deck boards, replacing only a few.

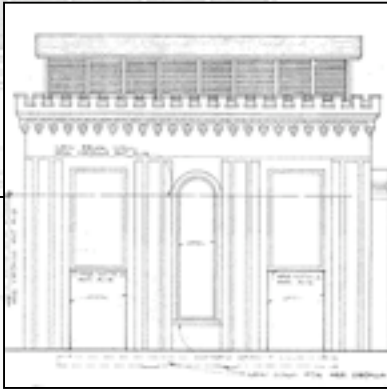


Current view of monitor with new decking and primary water proofing membrane.

Boiler House

Stabilization

Mortar joints on the Boiler House are severely deteriorated. Repointing has started on the west façade of the building.



Close-up view of deteriorated mortar joints



Newcomers, Brittany Barton and Tarin Erickson, take out deteriorating mortar from masonry joints.



Tender Frame Shop

Work progresses on the first floor of the Tender Frame Shop.

Rehabilitation



View of southeast room shortly after project began



Current view with CHS Preservation Team members Charles Adkins and Eric Pettingill painting the ceiling and doors.



Tender Frame Shop

Rehabilitation



View of southeast corner of the room shortly after project began



Current view



Kurt Benton builds a utility chase for the electric panels.

Tender Frame Shop

The temporary door on the west façade was falling apart and needed replacing. Since the door was a modern addition, it was replaced with one inspired by historic doors on the Paint Shop.

Door Repair



View of temporary door that was not original to the building.



Current interior view



Tender Frame Shop

CHS Preservation Team member Kurt Benton built a door for the west façade of the Tender Frame Shop. There was no historic documentation for the appearance of the original door, so the design of the door was inspired by the original Paint Shop doors.



Alexis Aubuchon works on a design for the Tender Frame Shop door while Roger Ruppe works on a plan for the Compressor Room roof drains.



Kurt Benton stands in front of the door he constructed.

Tender Frame Shop



The west façade door sill was suffering from termite damage and rot. CHS Preservation Team members repaired and replaced the threshold.



View of threshold before work began.



View of masonry found under rotted wood.



Tender Frame Shop

Masonry Repair



Finished view.

Under the guidance of Travis Brown, Masonry Foreman, Loraine Rodriguez repaired and replaced the threshold.



Tender Frame Shop

The windows on the first floor of the Tender Frame Shop are currently being restored by Charles Atkins, Eric Pettingill, and Amy Ver Beek.

Window Restoration



Charles, Amy, and Eric scrape and sand the window frames before repainting.

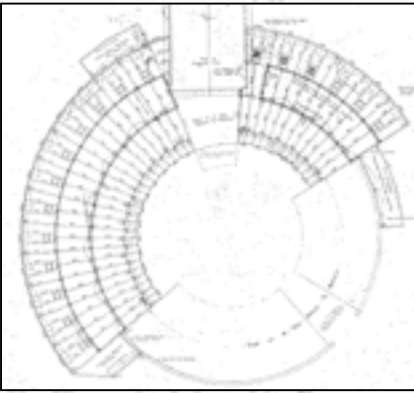


Amy applies Boracare to a Dutchman repair on the window frame. The application prevents termites and biological growth from damaging the wood.

Woodblock Floors

The woodblock floors in the Overnight Shed are currently being restored.

It takes a team.



Preservation Team member, James Jackson, inserts shims while Bill Hersch and Amy Ver Beek lay woodblocks.



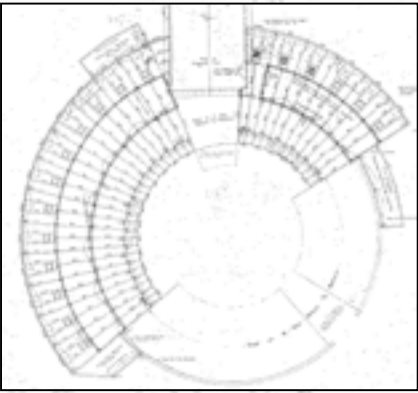
View of restored woodblock floor before a sealant is applied. Original woodblocks were used when possible.



DETAILS OF CAST IRON
RAIN CONDUCTORS.
SCALE 1/4" = 1'-0"
SEE SHEET #12 FOR CAST IRON
RAIN CONDUCTORS IN COLORED
LAUNDRY ROOM.

Woodblock Floors

It takes a team.



View of woodblock lane awaiting restoration.

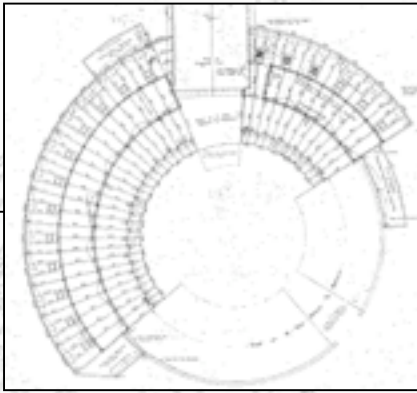


Restored woodblock lane.

DETAILS OF CAST IRON RAIN CONDUCTORS.
SCALE 1/4" = 1'-0"
SEE SHEET #12 FOR CAST IRON RAIN CONDUCTORS IN COLORED LAVATORY ROOM.

Woodblock Floors

A Day for a Concert



CHS Preservation Team members received a free concert when John Cougar Mellancamp shot his new video in the Overnight Shed.



John Cougar Mellancamp

2" V.C. PIPE TO
EQUIVALENT
RAIN CONDUCTOR TYPE "A"

DETAILS OF CAST IRON
RAIN CONDUCTORS.
SCALE 1/2" = 1'-0"
SEE DRAWING #12 FOR CAST IRON
RAIN CONDUCTORS IN COLORED
LAVATORY ROOM.

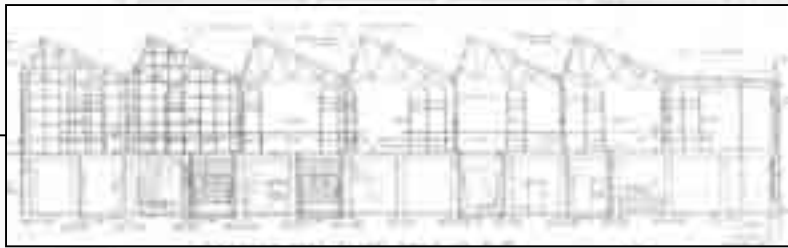
Woodblock Floors

A Day for a Concert

While at the Roundhouse, John Mellancamp signed a woodblock for Preservation Team member Bill Hersch.



DETAILS OF CAST IRON
RAIN CONDUCTORS.
SCALE 1/4" = 1'-0"
SEE DRAWING #12 FOR CAST IRON
RAIN CONDUCTORS IN COLORED
LAVATORY ROOM.



Coach & Paint Shops

How to Wash a Building

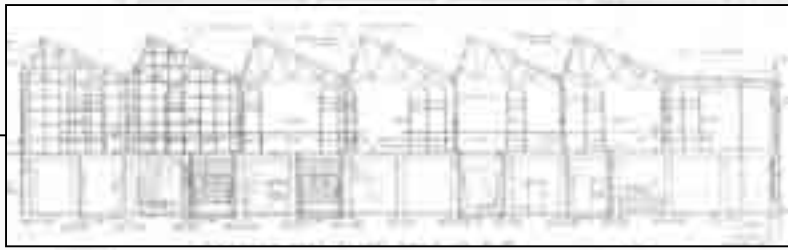
Preservation Team member, Jason Cobb, is currently pressure washing the Coach and Paint Shops.



View of Coach Shop as it is being pressure washed to remove biological growth and general dirt accumulation from the last 40+ years.



Left side of the building has been pressure washed while the right side awaits cleaning.



Coach & Paint Shops

Steel Column Repairs

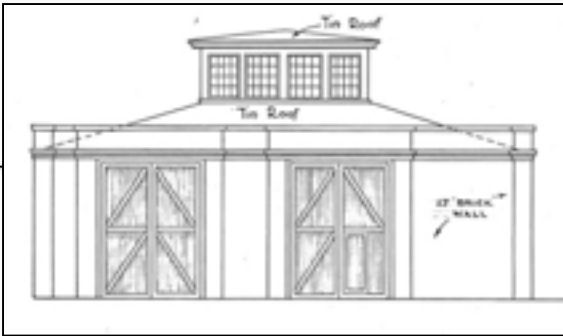
Members of the CHS Preservation continue to repair the steel columns in the Paint Shop.



Bryan Law installs a cap plate to support cross beams.



Joe Rothwell grinds a column to help conceal most of the weld seam. A small portion of the interior seam will be left visible to distinguish from the original and repaired parts of the column, a standard practice in historic preservation.



Carpentery Shop

Stabilization

The CHS Preservation Team continues working on the fourth phase of repointing on the east wall of the Carpentery Shop.



Ivey Ortiz repoints a section of the east wall.

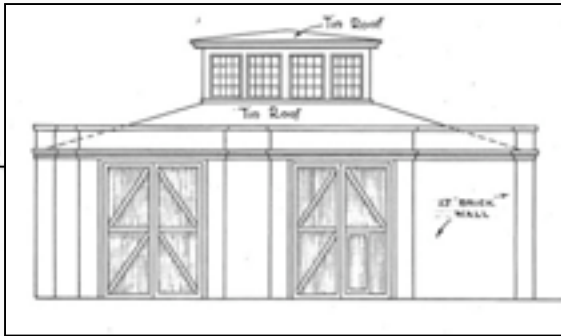


Current view

25 CROSS SECTION THRU BUILDING 'E'
SCALE: 1/4" = 1'-0"

35 PARTIAL ELEV. E. PARAPET
SCALE: 1/4" = 1'-0"

ORIGINAL



Carpentry Shop

Stabilization

The original hinges of the Carpentry Shop doors are badly deteriorated and need replacing.

Close-up view of deteriorated hinge



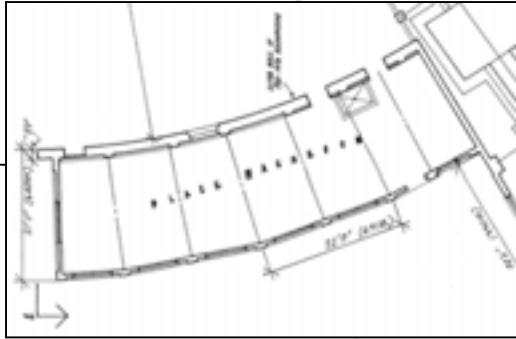
Hinges of the Carpentry Shop door frames will be replaced with new ones.



Amy Ver Beek paints the new hinges in preparation for insertion into the masonry door jambs.

LONGITUDINAL SECTION THROUGH BUILDING 'I'
SCALE 1/8" = 1'-0"

PARTIAL SECTION THROUGH PARAPET
SCALE 1/8" = 1'-0"



Colored Washroom

Window Restoration

The CHS Preservation Team is currently restoring the windows of the Colored Washroom.



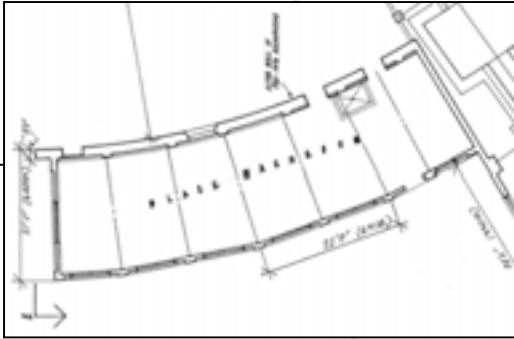
The windows were removed in order to restore them. This view shows two of the windows already removed.



A closer view of the deteriorated window sills suffering from rust jacking.

Colored Washroom

Window Restoration



The deteriorated sills suffered from rust jacking and needed replacing.



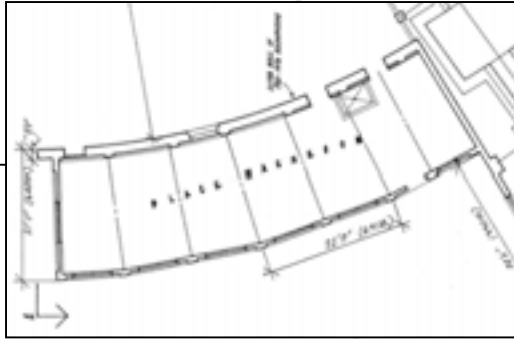
Close-up view of window sill that was suffering from rust jacking.



Masonry Foreman Travis Brown cuts away the deteriorated sill and creates a shoulder for the concrete repair patch, which ensures best adhesion to the original concrete.

Colored Washroom

Window Restoration



Travis prepares rebar to be painted with epoxy and inserted into the replacement sills. This practice helps prolong the longevity of the sill.



With help from Nathan Harris, Travis fills the sill form with concrete repair mortar that closely matches the original.

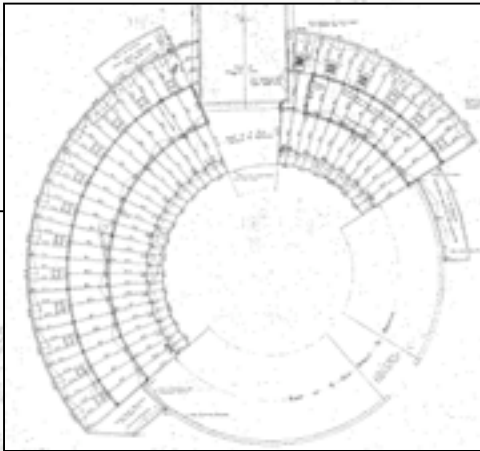


View of replacement sill.



Railcar & Locomotive Restoration

Railcars are currently being restored at the Roundhouse Railroad Museum.



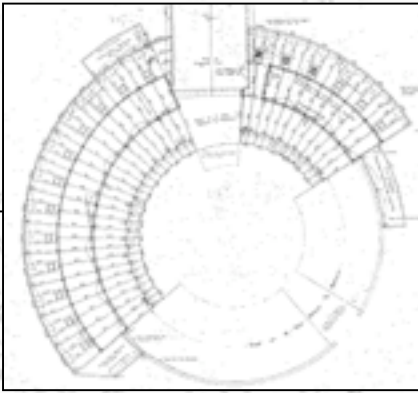
Steam locomotive, Georgia Power #30



Mr. Gary North works to restore Georgia Power #30.

DETAILS OF CAST IRON
RAIN CONDUCTORS.
SCALE 1/4"=1'-0"
SEE NOTE #12 FOR CAST IRON
RAIN CONDUCTORS IN COLORED
LAVATORY ROOM.

Railcar & Locomotive Restoration



Preliminary work has started for the restoration of the Augusta car.



Lily McNee is applying primer to a temporary car frame before it is painted and installed over two trucks.



Railcar truck

David Bird and Terry Koller will place the Augusta car on top of the frame and trucks before restoring it.

DETAILS OF CAST IRON RAIN CONDUCTORS. SCALE 1/4"=1'-0" SEE SHEET #12 FOR CAST IRON RAIN CONDUCTORS IN COLORED LAVATORY ROOM.

Archaeology

CHS Curator of Exhibits and Archaeology Rita Elliott and her crew investigate the corner of Purse and Harris Streets. Their investigation includes the remains of trash pits, privies, and foundations from former buildings. The study will provide a glimpse into the lives of past railroad workers and other families formerly living in the area.



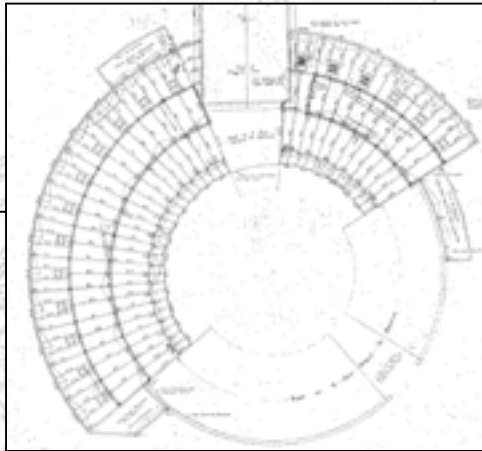
A view of the corner of Purse and Harris Streets looking east from the front entrance of the Roundhouse.



A portion of a foundation was unearthed during their archaeological dig.

OF CAST IRON
RAIN CONDUCTORS.
SCALE 1/4" = 1'-0"
SEE SHEET #12 FOR CAST IRON
RAIN CONDUCTORS IN COLORED
LAVATORY BATH.

Archaeology



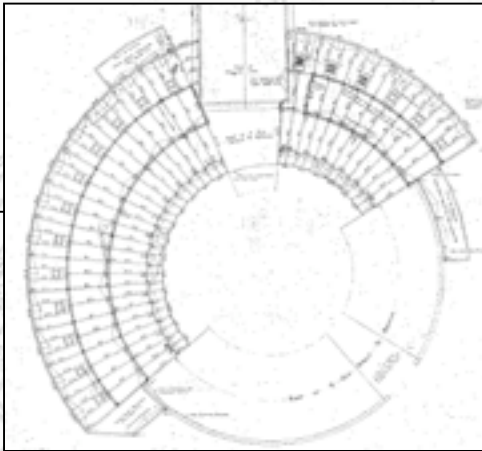
A view of some of the artifacts found during the archaeological dig. Items include parts of a child's tea set, a belt buckle, and comb.



CHS Archaeologist Rita Elliott makes field notes of the investigation.

DETAILS OF CAST IRON
RAIN CONDUCTORS.
SCALE 1/4" = 1'-0"
SEE DRAWING #12 FOR CAST IRON
RAIN CONDUCTORS IN COLORED
LAVATORY BATH.

Archaeology



A view of the dig in progress



The archaeological crew unearthed a trash pit, leaving the artifacts in situ until they're documented.

DETAILS OF CAST IRON
RAIN CONDUCTORS.
SCALE 1/4" = 1'-0"
SEE SHEET #12 FOR CAST IRON
RAIN CONDUCTORS IN COLORED
LAUNDRY BLDG.

Association for Preservation Technology Conference

Members of the CHS Preservation Team attended the Association for Preservation Technology Conference. The organization focuses on preservation techniques and methods for historic buildings. CHS was represented by a booth set up by Project Manager Patricia Davenport, an active member of APT.



Project Manager Brian White (left) views the CHS year-in-review DVD as Amy Ver Beek (above) mans the CHS booth.



Project Manager Terry Koller and Amy Ver Beek received scholarships to attend the conference.

DETAILS OF CAST IRON
RAIN CONDUCTORS.
SCALE 1/4" = 1'-0"
SEE DRAWING # 12 FOR CAST IRON
RAIN CONDUCTORS IN COLORED
LAVATORY ROOM.